

UNITED

every day

Report to Our Community
July 2023 – June 2024



UNITED WAY
of Southwestern
Pennsylvania

GUIDING PRINCIPLES

- First and foremost, drive equitable opportunity in the community.
- Listen to different and diverse voices, including our partners, donors and data to inform and act on pressing issues and needs.
- Focus on the most challenging and complex problems where there is clear community need; balance benefits for the entire region with hyper-local impact.
- Operate in collaboration with our partners; understand when to lead, when to follow, and when to get out of the way.
- Build long-lasting relationships by creating meaningful donor interactions instead of transactional engagement.
- Act deliberately and intentionally within the bounds of our resources and skill set; know and utilize our strengths.



Cover images, left to right. Top row: The Learning Lamp. Row two: Pittsburgh Scholar House, Robin's Home. Row three: Westmoreland Food Bank, Greater Hope Restoration Ministries, Just Harvest. Row four: Vintage Center for Active Adults, Auberle, Auberle. Row five: #IWantToWork initiative, Fayette County Community Action Agency, Latino Community Center.

UNITED IS THE WAY

MANY VOICES. ONE UNITED WAY.

Friends,

Here's a question for you: Are you United? Chances are, if you're reading this annual report to the community, the answer is a resounding "Yes." You have a vested interest in elevating the lives of our neighbors throughout southwestern Pennsylvania.

United Way brings together individuals from every neighborhood and every walk of life – with different passions, talents, abilities and means – to mobilize the power of collective giving, improve lives and build stronger, more equitable communities.

You'll be hearing from some of them in this report, giving a first-person account of what being United means to them. Their words give voice to the work we've done this past year louder than numbers or statistics ever could.

Thanks to the generous support of our donors, United Way leveraged \$31.4 million that made it possible for us to provide assistance to 1.35 million people. Thanks to you, we are able to meet basic needs, move individuals and families to financial stability, and help children and youth build for success in school and life.

We extend our heartfelt gratitude to all our partners and supporters as we progress on this journey together.

And, as always, thank you for being United.



A handwritten signature in blue ink that reads "Bobbi Watt Geer".

Bobbi Watt Geer, Ph.D.
President & CEO
United Way of Southwestern
Pennsylvania



A handwritten signature in blue ink that reads "Raymond W. Buehler, Jr.".

Raymond W. Buehler, Jr.
United Way Board Chair
Special Counsel,
Schneider Downs



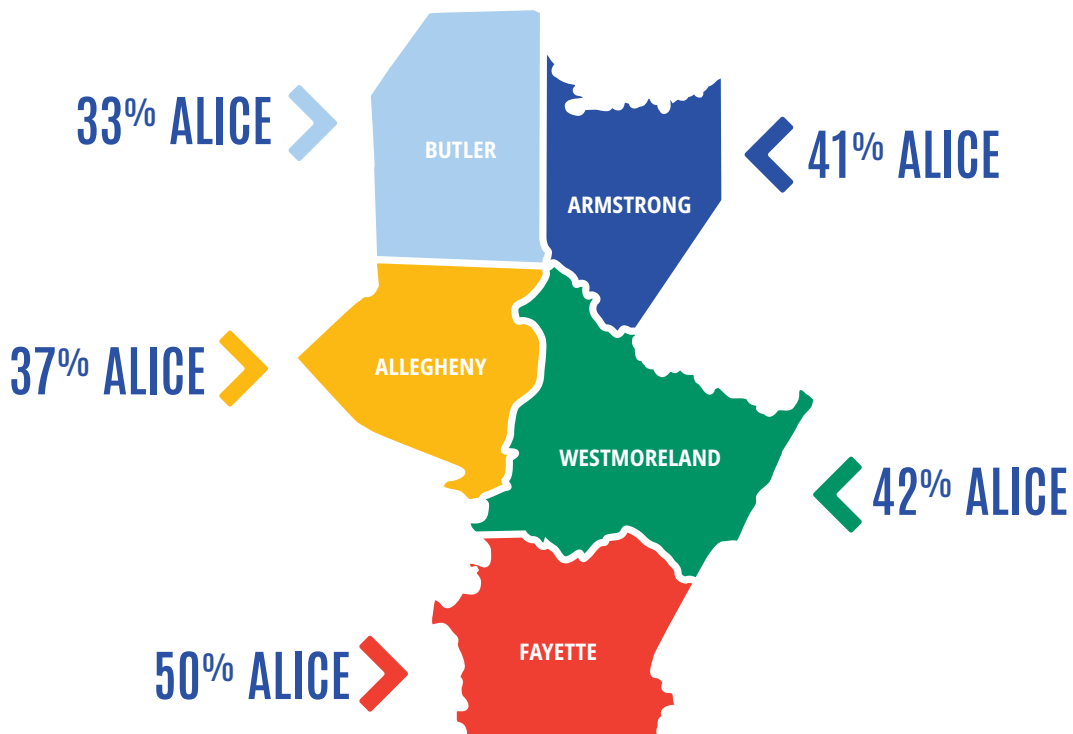
A handwritten signature in blue ink that reads "Stacy M. Juchno".

Stacy M. Juchno
United Way Board Vice Chair
EVP & General Auditor
The PNC Financial Services
Group, Inc.

POWERFUL REGIONAL IMPACT

Giving to United Way of Southwestern Pennsylvania continues to be the most effective way to significantly impact people in every town and neighborhood throughout our five-county region. Thanks to vast and deep donor support, United Way was able to invest \$31.4 million in meeting essential human needs and creating a pathway for more families and individuals to thrive at every stage of life.

In all, 1.35 million people received assistance from United Way last year. That support is critically needed. United Way's ALICE (Asset Limited, Income Constrained, Employed) data tracks the true costs of meeting basic needs such as housing, transportation, child care, health care and basic technology. ALICE data shows that 41% of households in southwestern Pennsylvania do not earn enough to afford the essentials, such as housing, child care, food, utilities and transportation.



ALICE data shows that households, especially those with small children in child care, need to earn as much as three times the federal poverty level (FPL) to make ends meet. However, many households earning above the FPL do not qualify for government assistance and rely on United Way partner agencies for support.

ADVOCATES FOR OPPORTUNITY

United Way helps mobilize our community to advocate for policy changes directly related to our work. In 2023-24, our legislative advocacy focused on four key areas:

- > Increasing Pennsylvania's budget funding for 211, a lifeline providing human services assistance to more people.
- > Uplifting digital equity efforts by increasing broadband access throughout the region and state.
- > Supporting efforts to ensure high-quality education and out-of-school time so that families with children know their children are safe and cared for while they are at work.
- > Continuing our long-standing advocacy for people with disabilities, including improving employment and educational options with our #IWantToWork campaign so that getting a job doesn't lead to the loss of life-sustaining medical benefits.

JOSIE IS UNITED >

"Something very cool about the #IWantToWork campaign is the gift I've had to be part of it. As a person with a disability, I not only could see what it looked like to write a bill, get it supported, get it voted unanimously through the House and Senate. But then I could go on to work within its framework and experience the benefit of the legislation. With Medical Assistance for Workers with Disabilities (MAWD) Workers with Job Success bill, now I could earn the money that I've deserved but could not earn before without putting my medical assistance at risk."

MAWD makes it possible for Pennsylvanians with disabilities to find fulfilling work, earn a life-sustaining wage and still keep their full medical coverage. The bill was passed in 2021 and has been expanded since to strengthen protections for people with disabilities.

Josie Badger is founder and president of J Badger Consulting Inc., and campaign manager of United Way's #IWantToWork initiative, which advocates for access to fully integrated employment opportunities and fair wages through policy, advocacy and education.



PA 211 SOUTHWEST

The region's front door to human services

211

^ ERICA IS UNITED

"Rental assistance and transportation are two of the biggest needs across the board. If you can't get to work, you can't supply for your family and then the bills don't get paid. Because I have personal experience needing assistance and contacting 211, I know how the client on the other end of the line feels. They're in distress. People want to feel like they're being listened to by someone who understands what they're going through. That gives me satisfaction, knowing I was able to be an ear when they needed someone."

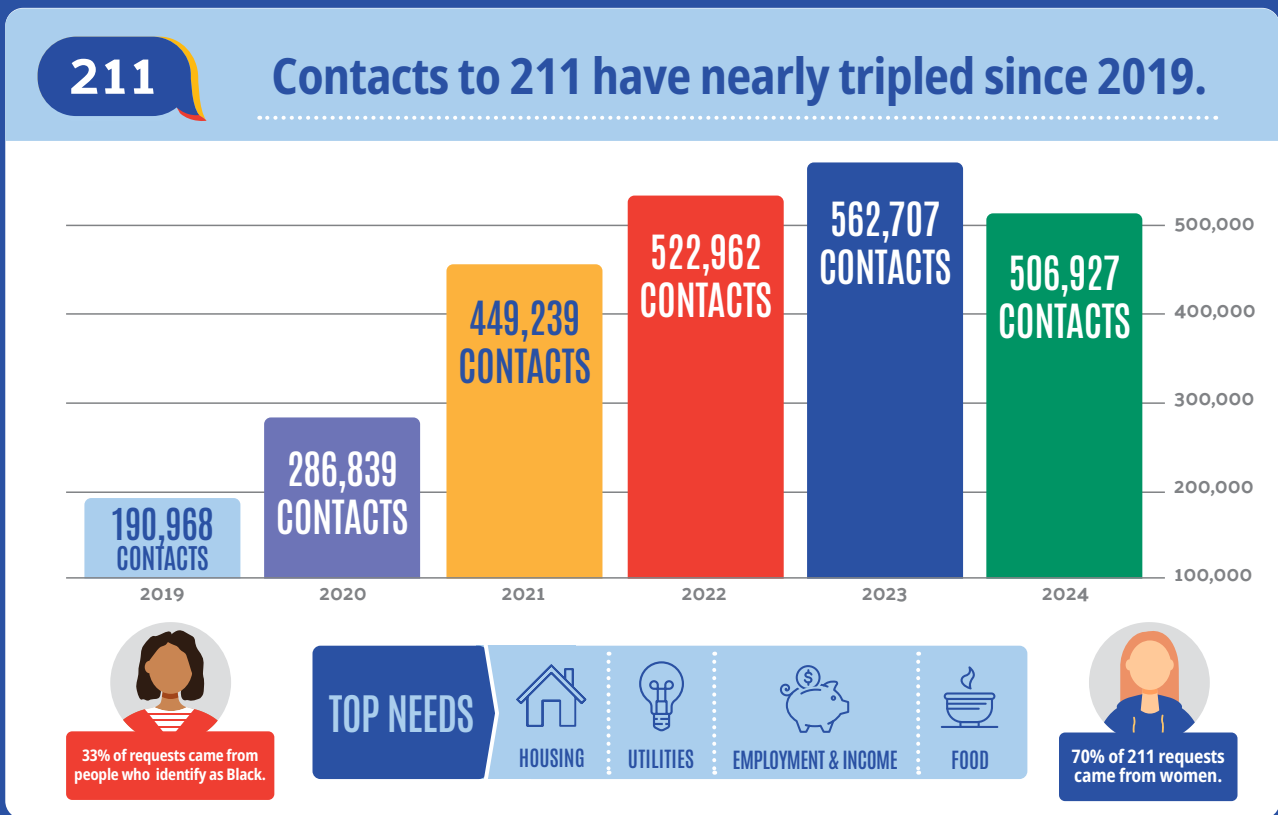
Erica Evans is a lead resource navigator with United Way's PA 211 Southwest, where she has connected people with essential services since 2016.

United Way's PA 211 Southwest helpline connects people from 30 of Pennsylvania's 67 counties to vital services in their area. From July 1, 2023 to June 30, 2024, 211 received nearly 507,000 requests for assistance via phone, text or online chat. Highly trained 211 resource navigators answer the call 24 hours a day, 365 days a year. They assess the unique circumstances of each person on a case-by-case basis, looking for factors that may have contributed to the situation. Then they connect the caller with agencies and services that can get them through the immediate crisis.

Resource navigators often follow up in the coming days or weeks to make sure that the immediate problem has been addressed and provide additional support going forward. All referrals are free and confidential and can be translated into more than 170 languages.



In this past year, nearly 507,000 individuals reached out to United Way's PA 211 Southwest helpline for help with meeting basic human needs.



MEETING BASIC NEEDS



United Way of Southwestern Pennsylvania helps people access essentials such as food, safe shelter and reliable transportation. These needs cut across every community in our region and extend far beyond individuals who live below the federal poverty line.

United Way continues to address the changing nature of basic needs in the modern world. Access to food and affordable and safe housing where residents can afford utilities will always be a priority. Today, however, reliable transportation and quality internet service have also become necessities for employment, health and the pursuit of education and career opportunities.

MARY IS UNITED

“Thanks to United Way, this past year we expanded our services and started the first certified peer specialist program focusing on the needs of women veterans. Our peer specialists work with veterans who don’t have the family support that a lot of people have. In addition to transitional housing, we provide free clothing, hygiene items, cleaning supplies and a place to hang out and connect with other veterans. There’s still a lot of work to do as a community in terms of meeting the needs of these women and helping them transition back into civilian life.”

Mary Chitwood is founder and executive director of Robin’s Home in Butler, Pennsylvania. Robin’s Home provides a range of services to women veterans and their children.

MOVING TO FINANCIAL STABILITY



LAMONT IS UNITED

“You can’t change and better yourself until you believe in yourself and know that you have value. Without a purpose, you’re just stagnant. As a young Black man, it’s easy to overlook yourself and not respect yourself as a human being. The program at Reimagine Reentry gave me a different approach on life. Now I have a new mindset and purpose based on my family, faith and what I want to accomplish in my career.”

Lamont Davis, Jr. is a 2024 graduate and valedictorian at United Way partner agency Reimagine Reentry, a nonprofit that provides wrap-around services for people who have been involved with the justice system to return home and reconnect with community, family and employment. He has started a new career as a roofing contractor.

Helping families and individuals get on a sustainable path to financial security is a core priority for United Way. We invest in organizations around southwestern Pennsylvania that provide tools and training essential to achieving success and building wealth.

Working in concert with United Way, these agencies help address racial, gender and geographic inequities. Our partners open doors to opportunities that have previously been closed. Data shows that many people work two or three jobs to make ends meet and are one unexpected setback—a health condition or a cut in hours—from a financial spiral.

We also invest in job training and financial wellness programs for veterans and people who have been previously involved in the justice system to help these individuals thrive. When everyone has enough, our entire community benefits.

BUILDING FOR SUCCESS IN SCHOOL AND LIFE

United Way invests in programs and nonprofits that help ensure children are prepared and excited to learn before the first day of school. We also work with school districts and agencies to support out-of-school programs after the school day and over the summer months. These programs give parents peace of mind that their children are safe and engaged while the adults are at work, and help children continue to learn and grow academically and socially.

Every young person deserves opportunities to reach their full potential and succeed. From preschool to post-high school, United Way is committed to providing the tools so our young people become the adults they are meant to be: thriving, engaged and contributing to the very best of their abilities.



KATHY IS UNITED >

“Child care is in crisis right now. Preschool and child care are severely underfunded. So that leaves most of the burden to pay on the parents. United Way helps us fill the gaps in some of our programming that we wouldn’t be able to provide without passing significant costs onto the parents. And if we did, it would be completely unaffordable for these parents to send their kids to summer camps, pre-school and child care programs.”

Kathy Morrell is development director for The Learning Lamp, which serves schools and families in 19 counties. The Learning Lamp’s highly qualified staff members offer love and attention to every child, helping them make a successful transition from home to child care.



HARNESSING THE POWER OF COMMUNITY

This year, United Way funded 150 programs at 110 agencies, many of which are run by members of the communities they serve. Workplace giving campaigns are a vital source of funding for our work. Nearly 500 local businesses and their employees organize effective and purposeful campaigns to generate financial support that improves the lives of families and individuals across our region.



< ERIC IS UNITED

“Nothing gets people back to campus like the events we do in support of United Way. It’s one thing to collaborate virtually with your team on a day-to-day basis. But with a large organization, United Way helps keep us engaged on a deeper, more human basis. I tell our younger employees that this is a great way to get involved and give back. It’s also an outstanding opportunity to network and be at the table with more senior people.”

Eric Saks is electronics & electrical marketing manager – Americas at Covestro where he also serves as a United Way employee engagement champion, leading Covestro’s workplace campaign.

FREE TAX PREP



EMMA IS UNITED

“People who have a lower income often have more complicated taxes than someone like me, who has one job. My taxes are pretty simple. Often, the individuals I see are working multiple jobs. Sometimes they are a contractor; sometimes they work for cash. The family situations can be complicated and so their taxes can be complicated. I know that a lot of people depend on the money they get back through Free Tax Prep to do home repairs or pay off their credit card bills.”

Emma Reed is a full-time software engineer and volunteers as a free tax preparer with Just Harvest.

HELPING FAMILIES ACCESS TAX REFUNDS

United Way and agency partner Just Harvest collaborate to help individuals and families making under \$65,000 annually to file their taxes and take advantage of eligible tax credits.

Since 2009, the Free Tax Prep Coalition has saved people more than \$28.8 million in tax preparation fees and helped access nearly \$199 million in returns. These are dollars individuals have earned and are entitled to but may not have otherwise received without guidance from Free Tax Prep coalition volunteers. United Way also runs the MyFreeTaxes.com where people can file their own taxes at no charge.

Because this service is available, thousands of families and individuals working hard for low wages are able to afford essentials like auto and home repair, tuition or savings.

FREE TAX PREP COALITION RESULTS

Tax Year	Number of Volunteer Preparers	Number of Returns Filed	Tax Prep Fee Savings	Dollars Refunded
Total	3,545	120,452	\$26,888,378	\$ 198,606,431
2023	313	8,952	\$ 2,417,040	\$ 11,959,123
2022	282	8,275	\$ 2,155,500	\$ 11,136,974
2021	249	7,435	\$ 1,796,610	\$ 14,411,961
2020	256	6,548	\$ 1,522,520	\$ 11,583,807
2019	279	8,261	\$ 1,933,770	\$ 14,095,751
2018	244	10,364	\$ 2,365,974	\$ 16,627,661
2017	209	8,881	\$ 1,996,713	\$ 18,836,007
2016	457	10,323	\$ 2,255,628	\$ 16,836,917
2015	326	9,996	\$ 2,154,120	\$ 15,618,230
2009–2014	930	41,417	\$ 8,290,503	\$ 67,500,000

THE VITAL ROLE OF VOLUNTEERING



Tools for Schools brings together United Way volunteers and corporate partners to unload, assemble and pack essential school supplies for delivery to 30 Allegheny, Armstrong, Butler, Fayette and Westmoreland county school districts.

^ ISIAH IS UNITED

“My first week at First National Bank, we did Tools for Schools. Honestly, I had no idea about United Way before the event, but it made me appreciate the fact that FNB is an action-oriented company that truly stands by their mission of improving the quality of life in our communities. It just brings me joy that I’m fortunate enough to be able to give back and help jump-start students’ school year with essential supplies they need to succeed.”

Isiah Neely serves on the corporate responsibility team at First National Bank, one of nearly 500 employers who support United Way of Southwestern Pennsylvania through workplace campaigns.

Engaging in volunteer opportunities creates a personal bond between United Way donors and the communities we serve. Volunteering brings together people from all walks of life into the arena of public service, and helps companies unite their employees around shared service projects. Volunteer engagement also gives our network agencies an opportunity to demonstrate to the broader community the important work they are doing.

Volunteering adds up!

This past year, United Way volunteers assembled and distributed:

- 37,253 books distributed to children.
- 28,269 period supply packs and 500 hygiene packs.
- 20,450 diapers.
- 10,960 school supplies for elementary school students.
- 8,402 tax returns generating \$11.2 million in refunds.
- 4,464 holiday cards for seniors.
- 3,350 early learning kits.
- 1,570 weekend meal kits for families.
- 600 bikes with helmets and bikes for children.



< JAVEN IS UNITED

“Every day when he comes home the first thing out of Javen’s mouth is ‘Can I ride my bike?’ He’s so happy and proud. The bike has also helped him connect with the family because I’m teaching him how to ride safely. Javen has been asking for a bike for a long time. God has answered our prayers.”

Darein Tucker lives in Jeannette, Pennsylvania, with her son Javen, age 7. This year, Javen was one of 600 children to receive a new bike through United Way’s Build A Bike volunteer event, now in its 10th year. Teams from our generous corporate partners work together to assemble high-quality bikes and prepare them for distribution through area organizations.

UNRESTRICTED GIVING

A higher percentage of donations were given to United Way without restrictions than ever before. Last year, 65% of contributions were made without restrictions on which causes or agencies will benefit, which provides United Way the ability to fund our investment priorities and address our region's most pressing needs.

Overall, United Way provided assistance to 1.35 million people throughout our five-county region.



< DORIS IS UNITED

“When I opened the chamber in 1998, it was important that I made it possible for my staff to be a supporter of United Way because it has been so worthwhile for me. I was raised to volunteer for others at an early age. I am proud to have increased my giving to United Way because I trust United Way to know where the resources need to go. Unrestricted giving allows them the flexibility to plan and use those funds where they are needed most through agencies to get the work done and assist the individuals who need it the most.”

Doris Carson Williams is CEO of the African American Chamber of Commerce of Western Pennsylvania. She is also a member of United Way's Tocqueville Society.

UNITED WAY LIFE™ AND PLANNED GIVING

One of the most significant ways to ensure your philanthropic legacy is to establish a United Way Life™ policy. This insurance policy has grown in popularity because it gives donors an easy, affordable way to create a sustainable impact for decades to come. Unlike traditional giving, a United Way Life policy multiplies in value – as much as 5 to 8 times the cost of the premiums you pay.

Similarly, planned giving is an opportunity to create a lasting impact while enjoying potential tax benefits. Gifts can include cash, investments, real estate and personal property. Different types of planned gifts, such as bequests, charitable gift annuities and retained life estates, offer different advantages and various tax implications. Please seek the services of a tax professional.

If you or your family would like to know more about United Way Life or Planned Giving, please contact Linda Jones at linda.jones@unitedwayswpa.org or 412-456-6768.



< ASHLEIGH AND DAVID ARE UNITED

“We believe we are all called to be good stewards of the gifts we have, including financial resources, but also the ability to live in the greatest country in the world, with the greatest economy in the history of the world. We are all fortunate to have a place here and have a duty to manage our resources and share with others. We have taken steps to protect our family if we were to pass away prematurely, and we felt it was important to help protect the charities we contribute to as well.”

Tocqueville Society donors Ashleigh and David Riehl have recently added United Way Life™ as part of their planned giving.

LEADERSHIP LEVEL DONORS

The long-term work of United Way would not be possible without our leadership-level donors. For decades, United Way has provided a well-traveled path for philanthropic-minded individuals and families.

Tocqueville Society

Ordre de la Liberté.....\$25,000+
 Le Champion..... \$15,000-\$24,999
 Membres de la Société .. \$10,000-\$14,999

Bridges Society

Heinz Level.....\$5,000-\$9,999
 Rooney Level.....\$2,500-\$4,999
 Keystone Level..... \$1,000-\$2,499

Tocqueville and Bridges Society Members are also welcome to join Women United, a powerful philanthropic collective that brings women together to give, volunteer and advocate around United Way’s investment priorities: meeting basic needs, moving to financial stability and building for success in school and life. These issues disproportionately impact women, particularly women of color, and children.

United Way is pleased to offer a convenient step-up plan for donors to reach these leadership levels at a pace that meets their needs.

RICH IS UNITED >

“United Way has always been a difference maker in our community. Think about it. If United Way didn’t exist, an individual donor’s dollar wouldn’t go nearly as far. We work together to identify the greatest needs of our community, and specifically the root causes. It’s much more than reacting to short-term problems, but instead addressing long-term issues.”

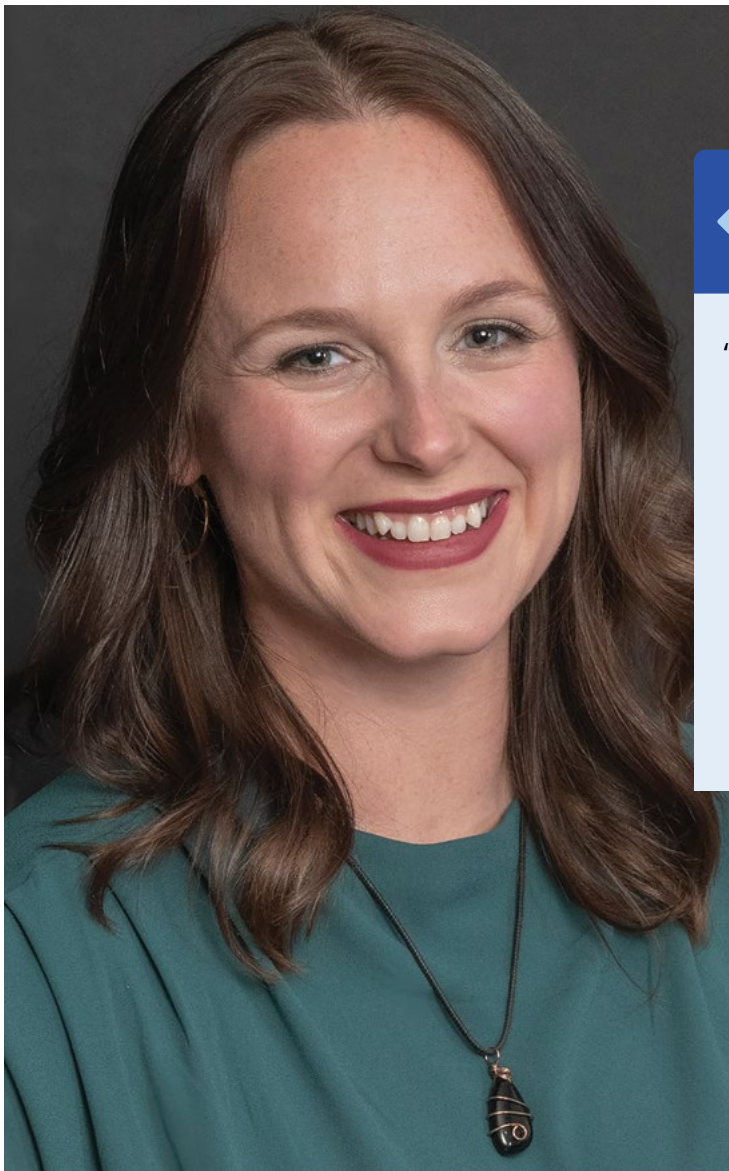
Richard J. Harshman is past board chair of United Way of Southwestern Pennsylvania and is a member of the Million Dollar Roundtable, which acknowledges lifetime gifts of \$1 million or more made through individual donations, family foundations or planned giving. Richard retired from Allegheny Technologies where he served as chairman, president and CEO.



WLC IS NOW WOMEN UNITED

For more than two decades, women giving to United Way at the leadership level have connected and bonded through the Women’s Leadership Council – one of the fastest growing and most dynamic philanthropic associations in the region. Earlier in 2024, with the strong support of its nearly 2,100 members, the organization was reimagined as Women United.

The new name reflects the diverse voices and backgrounds that comprise Women United and its commitment to advancing United Way’s investment priorities. It conveys the unifying power of personal connection to build a better future for all women and their children throughout our five-county area.



◀ RACQUELLE IS UNITED

“Throughout my life, I have had some major angels. Like the random woman who gave me \$100 so I could buy a prom dress. Moments like that shaped me and drove me to do what I can for others. If I can do my part to change a woman’s day, it can change the trajectory of her life. I want to inspire others to keep going no matter what obstacles they face and find the good out there.”

Racquelle Davis is founder and president of Transportation and Logistics at Zen Freight Solutions in Butler, Pennsylvania. She joined Women United in 2023.

A REVITALIZED BRIDGES SOCIETY

Passion, commitment and potential for meaningful contribution are not defined by chronological age. To fulfill our commitment to creating a more inclusive and diverse donor community, we removed the age-based requirement for recognition as a Bridges Society donor. Bridges Society unites generous donors who contribute \$1,000 or more each year and lead by example. This dynamic and diverse group of nearly 3,000 individuals participate in engaging volunteer activities, develop leadership skills and network with other like-minded professionals as well as C-suite business leaders.

Bridges Society members share their skills and build connections with other community-minded professionals through volunteering and networking events.



MICHAEL IS UNITED >

“Members of Bridges Society organically support each other and utilize their shared networks and expertise to continually shape and grow the organizations’ programs. Everyone’s voice gets heard, which means attention can be brought to issues that might be otherwise overlooked.”

Michael Iverson is test engineering lead at Motional. He and his wife, Julie, are Bridges Society members.

NEXT GEN: GOOD DEEDS, GOOD TIMES

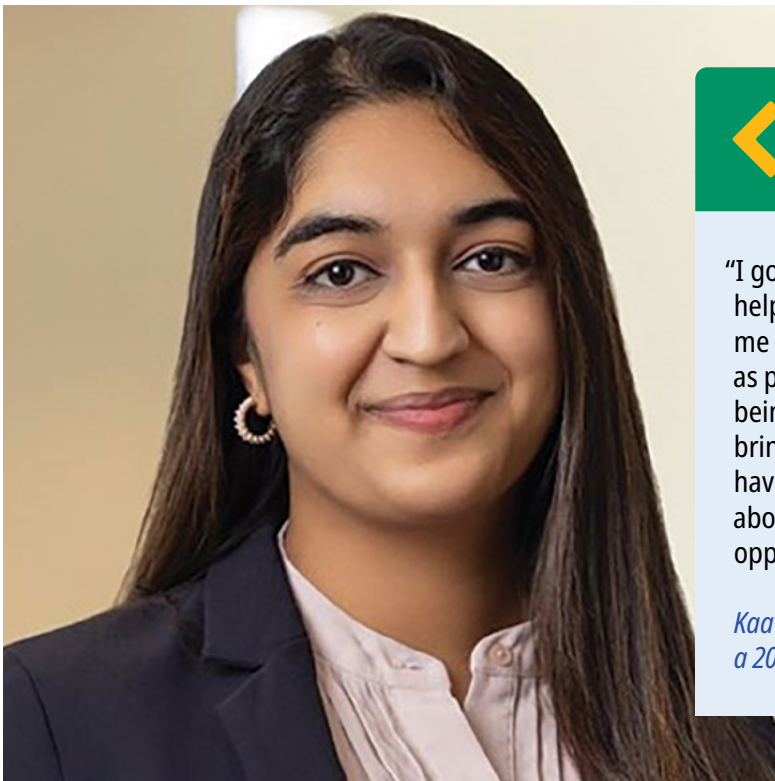
United Way's Next Gen Ambassador's Circle is a network of emerging leaders who share a passion for uplifting their community. Individuals 35 and under who donate at least \$120 and participate in a United Way activity every year are eligible to join Next Gen Ambassador's Circle. This year, Next Gen has expanded its volunteer and professional networking to engage a broader and more diverse cross section of young professionals.

In October 2023, Next Gen kicked off its campaign year with a reimagined Giveback Games event at Acrisure Stadium. Teams competed in volunteer activities such as packing educational STEM kits for students and working to balance the budget of a typical family caught in the "SNAP Gap" (the shortfall of essentials that aren't covered by government supplemental benefits).

Giveback Games sold out days before the event and the high-energy evening set the tone for a dynamic year of volunteering and giving back for Next Gen members.

CONNECT U

Every year, a select group of professionals representing companies and organizations in the region are invited to immerse themselves in the work of United Way through Connect U. This nine-week course provides up to 20 individuals a chance to go behind the scenes at nonprofits and see for themselves our partner agencies in action. If there is someone in your organization who you think would benefit from enrolling in the next class of Connect U, please contact Wendy Koch at wendy.koch@unitedwayswpa.org.



< KAAVYA IS UNITED

"I got into law because I wanted to be in a position to help people who don't have a voice. Connect U gave me an opportunity to meet others who were equally as passionate. I think just seeing firsthand the work being done here in Pittsburgh really inspired me to bring that back into my work and be more active. We have a group chat and people post every other week about volunteering opportunities and mentoring opportunities."

Kaavya Ramesh is a Pittsburgh-based attorney and a 2024 graduate of United Way's Connect U.

COMMUNITY CHANGE COLLABORATIVES

United Way is committed to creating long-term, sustainable change through collaboration with community members and subject matter experts to ensure that solutions offered are wanted and needed by the community. Now in their second fiscal year, Community Change Collaboratives bring neighbors together with thought-leaders, foundations, educators and government officials to tackle some of the biggest challenges facing our community. These issues defy simple remedies and affect a wide cross section of our communities.



For example, the Digital Equity and Inclusion collaborative works to make the internet more accessible to lower-income, rural and older residents. By bringing together corporate partners such as Comcast, nonprofit agencies and volunteers, and our PA 211 Southwest contact center, United Way has helped individuals secure internet service at low or no cost along with technical support and equipment. Reliable, high-quality internet access has become essential for employment, education and health care.

MAGGIE IS UNITED >

"It's crazy to think about how much we rely on internet access on a daily basis. A lot of the calls I get through 211 are families and younger people who are struggling to get on their feet. One woman was in a shelter with her two young daughters. She didn't have a computer and didn't have internet access. She only had her phone and could only afford very limited data. Thankfully, through 211 and Comcast, I was able to set her up with a computer in one day, and we did some basic skills training. She shared with me that she always had this desire to go back to school and finish her degree so she could better provide for her kids."

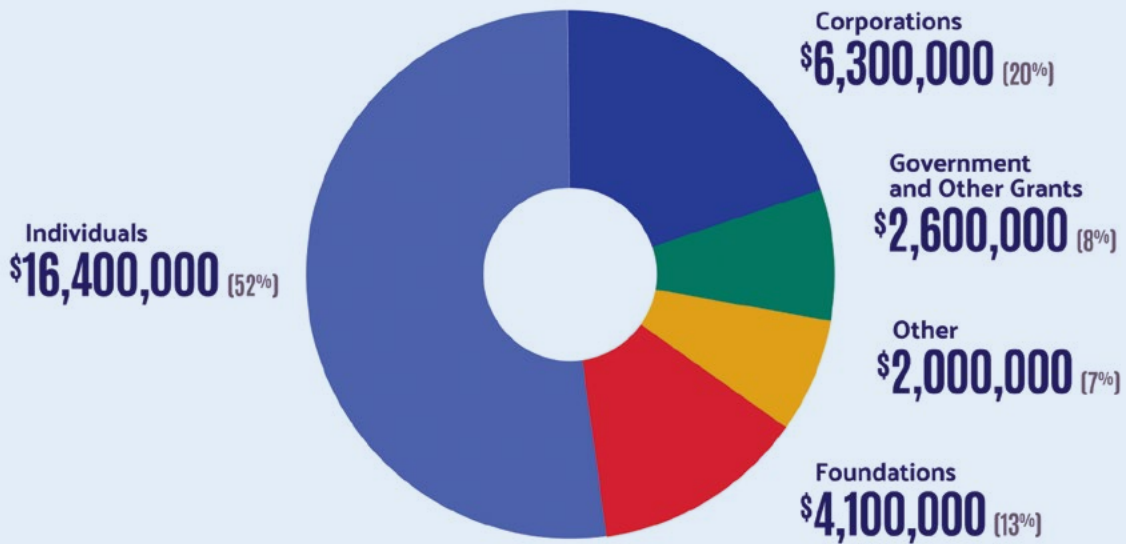
Maggie Bodeep is a digital navigator and administrative assistant at the YWCA Westmoreland County in Greensburg, Pennsylvania.



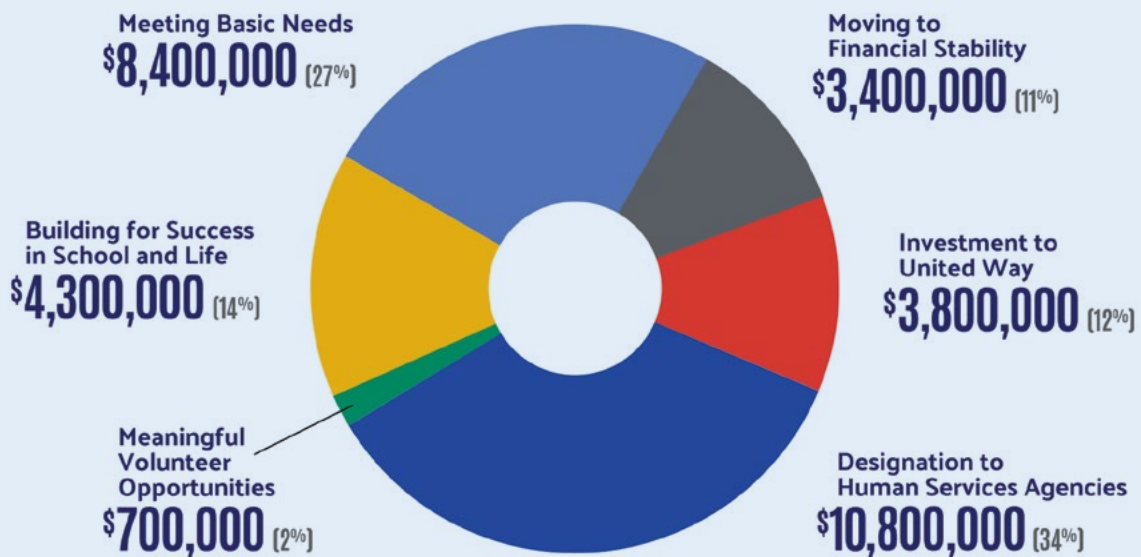
FINANCIAL INVESTMENT

Who gives to United Way:

From May 1, 2023 to June 30, 2024, corporations, foundations and individuals contributed \$31.4 million to fund meaningful impact for neighbors in our five-county region.



\$31.4 million invested by United Way in 2023-2024.



BOARD OF DIRECTORS

Raymond W. Buehler, Jr. (Board Chair)*
Special Counsel – Schneider Downs

Stacy M. Juchno (Vice Chair)*
The PNC Financial Services Group, Inc.

Curtis Aiken
Pro-Tech Compliance

Kenneth Altemus
Westinghouse Electric Company

Stephanie Apostolou
Koppers, Inc.

Kenny Bonus, CPA[^]
Bonus Accounting, LLC

Brooks Broadhurst*
Eat'n Park Hospitality Group, Inc.

Keri Brown
Giant Eagle, Inc.

Christine Bryant*
Brenntag

Jayme L. Butcher
Blank Rome

Franklin Cardenas+
Kennametal Inc.

Fernando Ceccarelli
Eaton

Jeffery P. Craft
Deloitte LLP

Zaira Cruz Melendez
Eaton

Maris Dauer
UPMC Health Plan

Robert A. DeMichieci*
Retired – UPMC

Michael R. Denove*
Ernst & Young

Kim Tillotson Fleming
Baird

Anne Foulkes
PPG

Josiah Gilliam
PUMP

Gretchen R. Haggerty*
Community Volunteer

Hayley A. Haldeman
Pittsburgh Cultural Trust

William Haldeman
University of Pittsburgh

Richard J. Harshman*
Retired – ATI Inc.

David B. Heaton
The Buncher Company

Diane P. Holder
UPMC Health Plan

Aaron Horsfield
UPMC Health Plan

Kathy W. Humphrey, PhD
Carlow University

Erin Isler
The PNC Financial Services Group

Justin Kaufman
PwC

Rebekah Byers Kcehowski
Jones Day

Katharine Eagan Kelleman
Pittsburgh Regional Transit

Darrin Kelly
Allegheny/Fayette Central Labor
Council, AFL-CIO

Elizabeth E. Krisher, CPA, CGFM*+
Maher Duessel

Karen L. Larrimer*
Community Volunteer

Dan LaVallee * ^
UPMC Health Plan

David W. Lynn+
Penn Line Enterprises, Inc.

Jeff Mallory, Ed.D.
Saint Vincent College

David J. Malone*
Gateway Financial

Chris McComish
S&T Bank

Crystal McCormick Ware
Duquesne University

James J. McQuade
Dollar Bank

Laura N.K. Miller, Esq.
UPMC Health Plan, Inc.

Tamra E. Minnier, RN, MSN, FACHE
UPMC

Myah Moore Irick, ChFC
The Irick Group, Merrill Private
Wealth Management

Emily Nally
University of Pittsburgh

James D. Newell
Buchanan Ingersoll & Rooney PC

Richard Novak
Federated Hermes, Inc.

Daniel A. Onorato
Highmark Health

Jake Ploeger
P.J. Dick / Trumbull / Lindy Paving family of
companies

Deborah L. Rice-Johnson*
Highmark, Inc.

Barry Robinson
First National Bank

Arthur J. Rooney II*
Pittsburgh Steelers Sports, Inc.

Catherine ("Casey") Ryan*
Reed Smith LLP

James R. Segerdahl
K&L Gates

Steven D. Thompson, CPA
Schneider Downs

Mark A. Twerdok
KPMG

Tom VanKirk*
Retired – Highmark Health

Donald Vigliotti, MD
Community Volunteer

Marc Williams
FedEx Ground

Most Reverend David A. Zubik*
Bishop of Pittsburgh

* Executive Committee Member + Westmoreland/Fayette Representative ^ Butler/Armstrong Representative

LOCAL OPERATING BOARDS

BUTLER & ARMSTRONG COUNTIES

Kenny Bonus, CPA
Bonus Accounting, LLC

Ronald G. Bowser
USW International

Debbie Crum
Butler County Tourism &
Convention Bureau

Kim Geyer
Butler County Commissioner
Butler County Employees

Jean M. Gilkey

Sheri Hershberger

Darla Livermore
NexTier Bank

John Perock
Westinghouse Electric Company

Steven T. Powers
Calumet Refining, LLC

Belinda Richardson, Ed.D.
Butler County Community College

Jessica L. Troiano

Tiffany Trudgen

Donald Vigliotti, MD
Community Volunteer

WESTMORELAND & FAYETTE COUNTIES

Rosalie J. Bell, Esq.

Robert Brooks
Community Volunteer

Dan DeBone
Westmoreland Chamber of Commerce

David K. Ebersole
Westinghouse

Suzanne Wilcox English
Cathedral Corporation

James A. Frey
Gulf Coast Bank & Trust Co.

Lindsay A. Herrod
Westmoreland County
Community College

John Kline
1st Summit Bank

Elizabeth E. Krisher
Maher Duessel Westmoreland

Brian Lawrence
Westmoreland County Redevelopment
Authority and Land Bank

David W. Lynn
Penn Line Enterprises Inc.

Dirk Matson
Community Volunteer

Ron Ott
Community Volunteer

Nick Pflugh
Community Volunteer

Denice Ferranti-Robinson
Community Volunteer

Douglas V. Sanner Jr.
Ford Office Technologies

Daniel Wagner
First Commonwealth Bank

LaDawn Yesho
S&T Bank

FOUNDATION PARTNERS

We recognize and salute the corporate and family foundations that support our work and enable us to respond to the needs of the community.

Ben Franklin Trust

BNY Mellon Foundation

Claude Worthington Benedum Foundation

E. Louis Feldman Charitable Trust

Eden Hall Foundation

Edith L. Trees Charitable Trust

Eleanor D. Merrick Foundation

First Energy Foundation (West Penn Power)

FISA Foundation

Hillman Family Foundations (Mary Hillman Jennings Foundation)

James L. and Lucy K. Schoonmaker Foundation

Jefferson Regional Foundation

Jewish Healthcare Foundation

John E & Sue M Jackson Charitable Trust

John R. and Margaret S. McCartan Charitable Fund

Keppel Family Fund

M&T Charitable Foundation

Massey Charitable Trust

McAuley Ministries

McElhattan Foundation

Mendel & Sylvia Solomon Trust

Michael John Kakos and Aimee Rusinko Kakos Foundation

Paul and Anne Smiy Family Foundation

Pennsylvania Development Disabilities Council

Pennsylvania Housing Finance Agency

Pitcairn-Crabbe Foundation

Richard King Mellon Foundation

Roy A. Hunt Foundation

Snyder Charitable Foundation

Synthomer Foundation

The Buhl Foundation

The Cleveland Cliffs Foundation

The Community Foundation of Westmoreland County

The Fine Foundation

The Grable Foundation

The Jack Buncher Foundation

The Margaret M Patton Trust for Charities

The Pittsburgh Foundation

The Siemer Institute for Family Stability

CORPORATE GIFTS

Thank you to these companies that allocated at least 50% of their gift of \$10,000 or more to United Way without restrictions on what agencies or causes will benefit.

The PNC Financial Services Group, Inc.*
Highmark Health / AHN*
PPG**
FedEx Corporation**
Peoples*
MSA Safety, Inc.**
Williams**
Eat'n Park Hospitality Group, Inc.**
First Energy **
Pittsburgh Steelers Sports, Inc.*
First National Bank of Pennsylvania**
Buchanan Ingersoll & Rooney PC
Giant Eagle**
Federated Hermes, Inc.**
Dollar Bank**
Kennametal Inc.*
Koppers Inc.*
Covestro LLC **
Westinghouse Electric Company*
Eaton Corporation**
P. J. Dick / Trumbull / Lindy Paving family of companies**
Comcast NBCUniversal**
Duquesne Light Company / IBEW Local 29**
Naval Nuclear Laboratory**
Bayer Radiology LLC**
Electrical Workers and Employers of IBEW Local Union No. 5**
United Steelworkers**
Calgon Carbon Corporation*
NOVA Chemicals Inc.**

BNY Mellon**
The Cleveland-Cliffs Foundation**
Baird, Inc.**
AAA East Central – Headquarters**
Wabtec
LANXESS Corporation**
The Techs**
ATI**
Pittsburgh Penguins**
Pittsburgh Pirates**
Matthews International Corporation**
UPMC**
Ebara Elliott Group**
Exxon Mobil Corporation / XTO Energy**
M&T Charitable Foundation**
The Buncher Company*
First Commonwealth Bank**
Sheetz, Inc.**
Schneider Downs
NexTier Bank**
Snyder Charitable Foundation**
Curtiss-Wright**
Agr International, Inc.**
Massaro Construction Group**
Acrisure**
Carpenter Technology Corporation**
Fifth Third Bank**
Gateway Financial Group, Inc.**

** = 100% Unrestricted contributions to United Way.

* = 50%+ Unrestricted contributions to United Way.

OUR PARTNER AGENCIES

MEETING BASIC NEEDS

412 Food Rescue ^A

Food Recovery Operations Support

Abiding Missions ^A

No Neighbors in Need

ACTION-Housing, Inc. ^A

The Sustainable Home Improvement Program

American Cancer Society ^B ^W

Access to Care

American Red Cross, Southwestern Pennsylvania Chapter ^A

Community Partnership

American Red Cross, Southwestern Pennsylvania Chapter ^A ^B ^F ^W

Disaster Relief

Bethany Christian Services of Western Pennsylvania ^W

Safe Families for Children™ (SFFC)

Beverly's PGH ^A ^W

A Formula for Cheer: The Greater Pittsburgh Infant Formula Bank

Bible Center Church Inc ^A

Oasis Farm and Fishery (OFF)

Blackburn Center ^W

Emergency Shelter for Victims of Domestic Violence, Legal and Medical Advocacy, Outreach Program to Protect Older Adults from Abuse

Catholic Charities of the Diocese of Greensburg ^A ^F ^W

Information and Referral

Catholic Charities of the Diocese of Pittsburgh Inc. ^A

Community Partnership

Catholic Charities of the Diocese of Pittsburgh Inc. ^B

Families and Communities Thriving

Center for Community Resources, Inc. ^B

Utility Integrated Point of Contact (UIPOC)

Center for Hearing & Deaf Services, Inc. ^F ^W

Sign Language and Interpretation Supports

Court Appointed Special Advocates Inc. (CASA) of Westmoreland, Inc. ^W

Operational Support

Domestic Violence Services of Southwestern PA ^F

Fayette Safe House Program

Familylinks Inc. ^A

Familylinks Community Connections Program

Fayette County Community Action Agency Inc ^F

FCCAA Food Bank

Glade Run Lutheran Services ^B

Warming Center

Global Links ^A

Community Partners Program - Personal Care Kit Initiative

Greater Pittsburgh Community Food Bank ^A

Fresh Foods Initiative

Helping All Victims in Need HAVIN ^A

Safety and Support for Survivors

Interfaith Volunteer Caregivers of Fayette Inc ^F

Interfaith Volunteer Caregivers of Fayette Inc

Jean B. Purvis Community Health Center ^B

Dental Care for the Uninsured

Jewish Community Center of Greater Pittsburgh (JCC) ^A

AgeWell Pittsburgh

Jewish Family and Community Services ^A

SOS Pittsburgh

Jubilee Association, Inc. ^A

Strengthening Basic Needs and Social Services

Just Harvest Education Fund ^A

Building Economic Justice and Food Justice For All

Just Mediation Pittsburgh ^A

Eviction Prevention Mediation Support Services

Knead Community Café ^W

Knead Free Meal Program

Laurel Area Interfaith Volunteer Caregivers ^W

Local Elderly Thrive Not Just Survive

Lifesteps ^B

Adult Day Health Services (ADHS)

Macedonia Family & Community Enrichment Center (FACE) ^A

Macedonia FACE Active for Life Senior Center, Macedonia FACE Lifeline Program, Meals on Wheels of Greater Pittsburgh

Neighborhood Legal Services Association ^A ^B

Project Shape: Stabilizing Housing and Preventing Evictions through Community Partnerships

North Hills Affordable Housing (dba HEARTH) ^A

HEARTH Transitional and Supportive Housing Program

Northern Area Mutli-Service Center of Allegheny Co. A

Transportation HUB Solutions-Linking Transportation Models to Address Service Inadequacy

Pittsburgh Food Policy Council A

Network in Action: Implementing a Regional Food Plan

RentHelpPGH A

Housing Stabilization Center Resource Navigator and Appeals Specialist

Robin's Home, Inc B

Robin's Home Women Veteran Peer Support Program

Salvation Army of Western PA A

Community Partnership

Salvation Army of Western PA B W

Comprehensive Social Services

SisTers PGH A

Rent/Utility and Emergency Assistance Program

South Hills Interfaith Movement A

Holistic Household Stability

SPHS Connect Inc. W

Welcome Home

The Lighthouse Foundation B

The Lighthouse Foundation Food Pantry, Transitional Housing

The Union Mission W

Homeless Response System

Veterans Leadership Program of Western Pennsylvania, Inc. A

Project Journey

Veterans Place of Washington Boulevard A

Veterans Resource Center

Vintage A

Senior Community Center

Western Pennsylvania Diaper Bank A F W

Basic Needs Distribution

Westmoreland County Food Bank W

Westmoreland Food Bank Outreach and Expansion Program

Women's Center and Shelter of Greater Pittsburgh A

Immediate Needs Coordination for Survivors of Intimate Partner Violence, Preventing Homelessness through Expanded Housing Advocacy for Victims of Intimate Partner Violence

YWCA Greater Pittsburgh A

YWCA Greater Pittsburgh's Emergency Basic Needs Program

MOVING TO FINANCIAL STABILITY**ACHIEVA** A

Benefits Counseling

Allegheny Family Network A

AFN Adult Education Program

Auberle A

Life Changing Career Pathways

Bidwell Training Center A

Bidwell Training Center's Career Training Programs

Catapult Greater Pittsburgh A

Asset Building Program

Center for Community Resources, Inc. B

Volunteer Income Tax Assistance (VITA)

Community Kitchen Pittsburgh A

Community meals and culinary training for people overcoming adversity

Dress for Success Pittsburgh A

Supporting Mobile Services

Fayette County Community Action Agency Inc. F

Financial Opportunity Center

Human Services Center Corporation A

Human Services Center's Financial Empowerment Community Outreach

Jeremiah's Place A

Crisis Childcare Program

Jewish Family and Community Services A

JFCS Career Development Services

Lifesteps B

Transition and Employment Services

Life'sWork of Western PA F W

Employment support services for individuals in recovery from Substance Use Disorders

Literacy Pittsburgh A

Ready and Relevant Student Services

Mon Valley Initiative A

MVI Workforce Development & Financial Coaching Program

Neighborhood Allies A

Building Opportunity through Financial Empowerment

New Century Careers, Inc. A W

Training for In-Demand Jobs through the Manufacturing 2000 (M2K) PA Pre-Apprenticeship Program

OUR PARTNER AGENCIES

PA Women Work ^A

Economic Mobility Through Mentorship

Pittsburgh Scholar House ^A

Pittsburgh Scholar House Wayfinders Program

Reimagine Reentry ^A

Multi-Craft Core Curriculum (MC3)

Travelers Aid Society of Pittsburgh ^A

Travelers Aid Transportation Collaborative

Tri-City Life Center, Inc. (DBA TryLife Center) ^W

Understanding Family Finances

Westmoreland Community Action ^W

Housing Counseling Money Management Center / VITA

When She Thrives ^A

When She Thrives Operating Support

YWCA Butler ^B

Getting Ahead in a Just Gettin' By World

YWCA Westmoreland County ^W

Program expansion – Literacy, Financial, and Digital literacy

BUILDING FOR SUCCESS IN SCHOOL & LIFE

Alliance for Refugee Youth Support and Education ^A

ARYSE Academy

Armstrong Center for Community Learning ^A

Outdoor Discovery Center Nature Lessons

Bhutanese Community Association of Pittsburgh (BCAP) ^A

Afterschool Academy

Big Brothers Big Sisters of Greater Pittsburgh ^A

Community-based Mentoring Program for Historically Underserved Youth

Big Brothers Big Sisters of the Laurel Region ^{F W}

Positive Relationships with Strong Role Models for Westmoreland and Fayette Youth

Blackburn Center ^W

Dating Violence, Sexual Abuse and Bullying Prevention Programs in Schools

Boys & Girls Clubs of Western Pennsylvania ^A

Activating and Advancing the Potential through BGCWPA in 2023

Center for Hearing & Deaf Services, Inc. ^W

Deaf Youth/Friends Program

Center of Life ^A

Supporting Youth-Enrichment, Family-Strengthening, and Community-Empowerment Programs

Children's Hospital of Pittsburgh Foundation ^A

Coaching Boys Into Men - An Effective School Athletics-Based Program to Reduce Dating Violence

Community Care Connections, Inc. ^B

Camp Apple with Teen Camp Apple

Crossroads Foundation ^A

Equitable Pathways: Bridging Educational Gaps for Future Success

Domestic Violence Services of Southwestern PA ^F

Connected and Respected, Social Emotional Learning for a Healthier Tomorrow

Early Learning Connections ^B

Family Engagement and School Readiness Events

East End United Community Center ^F

Exploring the World Around Us

Ford City Public Library ^A

Community Tutoring Program

Greensburg Hempfield Area Library ^W

Early Career Ramps @ Public Libraries

Gwen's Girls, Inc. ^A

STEMpowered Career Preparatory Program

Helping All Victims in Need HAVIN ^A

Healthy Relationships Project

Homeless Children's Education Fund ^A

Teen Outreach Program

Homewood Children's Village ^A

Building A Pathway to Success: The College & Career Readiness Project

Human Services Center Corporation ^A

Human Services Center Youth Moving Towards Success

Industrial Arts Workshop ^A

Expanding School Partnerships

Latino Community Center (LCC) ^A

Empowering Allegheny County Latinx Children and Parents for Long-Term Success

Lifesteps ^{A B}

Early Education Advancement Services

Life'sWork of Western PA A

Enable Youth with Disabilities Make a Successful Transition from School to the World of Work

Mooncrest Neighborhood Programs / Hopebound Ministries A

Mooncrest After School Program (MASP)

Mosaic Community Development Center W

Mosaic Community Development Center After School Program

Neighborhood Learning Alliance A

High School University (HSU)

PEAL Center Parent Education and Advocacy Leadership A

21 and Able

Sonward Youth Programs W

Elevate – Opportunity Lunch and Learn Mentor Program

STAT Inc. – Ligonier Therapeutic Center F W

The EQUINE Affect™ for Adolescents (Afterschool/Summer Programs)

STEM Coding Lab, Inc. A

K-8 Computer Science Education Program Expansion

The Arc of Butler County B

AERO (Activities, Employment, and Recreational Opportunities)

The Learning Lamp F

Expansion of Early Childhood Mental Health Consultant Program in Southwestern PA

The Women and Girls Foundation A

Girl Gov: Middle School

Valley Points Family YMCA W

Valley Points Family YMCA Early Learning Centers

Vision To Learn B W

Expanding Vision Care Access for Students in Southwestern Pennsylvania

Volunteers of America of Pennsylvania A

The Youth Empowerment Program (YEP)

Waypoint Youth & Community Center Inc. W

Waypoint Youth Out Of School Time Program

Wesley Family Services A

The Incredible Years Parenting Program

WQED B W

Teaching Preschool Children SEL Skills via Family Engagement Programs

YWCA Greater Pittsburgh A

YWCA Greater Pittsburgh's Educational Opportunity Programs

COMMUNITY PARTNERS

Allies for Children A**American Red Cross, Southwestern Pennsylvania Chapter** A**Program to Aid Citizen Enterprise** A**Salvation Army of Western PA** A

TOP WORKPLACE CAMPAIGNS

We are especially grateful to these companies and organizations for their extraordinary success in leading employee fundraising campaigns. We salute their dedication to our community and their ability to foster a culture of giving in their workplaces.

The PNC Financial Services Group, Inc.

UPMC

Highmark (includes AHN)

PPG

University of Pittsburgh

K & L Gates LLP

FedEx Corporation

ATI

MSA Safety, Inc.

Baird, Inc.

Federated Hermes, Inc.

Pittsburgh Steelers Sports, Inc.

KPMG

Covestro LLC

Peoples

Giant Eagle

Williams

Buchanan Ingersoll & Rooney PC

Kennametal Inc.

First Energy (formerly West Penn Power)

First National Bank of Pennsylvania

Naval Nuclear Laboratory

Eat'n Park Hospitality Group, Inc.

Eaton Corporation

Reed Smith LLP

Deloitte

Schneider Downs

Ernst & Young LLP

PwC

Arconic

Koppers Inc.

Northwestern Mutual

Westinghouse Electric Company

Dollar Bank

P. J. Dick / Trumbull / Lindy Paving family of companies

Pittsburgh Regional Transit

Carnegie Mellon University

United States Steel Corporation

Dentons Cohen & Grigsby

Duquesne University

BNY Mellon

Bayer Radiology LLC

Calgon Carbon Corporation

NOVA Chemicals Inc.

Costco Wholesale

Wabtec Corporation

Duquesne Light Company / IBEW Local 29

Jones Day

United Way of Southwestern Pennsylvania

Raymond James Financial Services

Elliott Group

Curtiss-Wright

AAA East Central – Headquarters

Bechtel Plant Machinery, Inc.

LANXESS Corporation

United Steelworkers

Clark Hill PLC

Henderson Brothers

Glimcher Group
Electrical Workers and Employers of IBEW
Local Union No. 5
Centene Corporation
The Techs
S&T Bank
Blank Rome LLP
City of Pittsburgh
The Buncher Company
First Commonwealth Bank
NexTier Bank
ECHO Realty, L.P.
Calumet-Penreco LLC
Matthews International Corporation
Jewish Healthcare Foundation of Pgh.
Erie Insurance
Alcoa, Inc.
Goldberg Persky & White PC
Columbia Gas of Pennsylvania
Maher Duessel
Reiferson Dee PLC
Bank of America
Pittsburgh Penguins
Pittsburgh Pirates
Massaro Construction Group
Enterprise Rent-A-Car Company
Allegheny Intermediate Unit
Northwest Bank

Exxon Mobil Corporation
Carmeuse North America
Tucker Arensberg, P.C.
Gateway Financial Group, Inc.
Carpenter Technology Corporation
My Benefit Advisor
African American Chamber of Commerce
of Western Pennsylvania
Dickie McCamey Chilcote PC
Agr International, Inc.
ALCOSAN
Target
Wesley Family Services
Alstom
Grant Thornton LLP
KeyBank



UNITED WAY
of Southwestern
Pennsylvania

..... **THREE OFFICES SERVING THE REGION**

1250 Penn Avenue
Pittsburgh, PA 15222
412-261-6010

124 Hollywood Drive
Butler, PA 16001
724-487-6032

1011 Old Salem Road
Greensburg, PA 15601
724-834-7170



United Way of Southwestern Pennsylvania serves
Allegheny, Armstrong, Butler, Fayette and Westmoreland counties.



Since 2011, United Way of Southwestern Pennsylvania has earned a four-star rating from Charity Navigator, the nation's leading philanthropic evaluator. To review our Form 990 and other financial reports, please visit unitedwayswpa.org/about-us/our-financials.