



UNITED WAY
of Southwestern
Pennsylvania

2024-2025 ANNUAL REPORT

SCENES FROM A THRIVING COMMUNITY



OUR MISSION

United Way of Southwestern Pennsylvania improves lives by mobilizing the caring power of community. Working with individuals, businesses and organizations, we help people in Allegheny, Butler, Westmoreland, Fayette and Armstrong counties to measurably improve their lives and create long-lasting change for the betterment of our community.



Cover images clockwise from the top: Hometown Huddle with Logan Lee at the Boys & Girls Club of Western Pennsylvania. Women United Athena Day of Caring. Women United wine tasting. NextGen donor group event. Meal Kit Packing. PPG Day of Caring.

Images courtesy of our agency partners and by Nancy Andrews, Joe Appel, Sean Carroll, Jason Cohn, Cuning Folk Films, Renee Rosensteel and Maranie Rae. Design by Matt Hildebrand.

Writing and editing by Gordon Robertson of Hullabaloo Agency and Kitty Julian.

Proofreading by Karen Carlin. Printing by AlphaGraphics in the Strip.

MESSAGE FROM LEADERSHIP

Friends,

Every day across southwestern Pennsylvania, you can find scenes of a thriving community: a child stepping into a classroom with confidence, a family able to get ahead financially and feel more secure, or a neighbor meeting basic needs through the 211 helpline. These moments don't happen by chance. They happen because of you and the collective impact of United Way of Southwestern Pennsylvania.

Last year, a study by PwC affirmed what we've long known: Your investment in United Way makes an oversized impact on our entire region. For every \$1 contributed, \$2 in economic impact is generated, supporting hundreds of jobs and strengthening our regional economy. The fact that every dollar invested generates two dollars in economic value for our region is proof that social impact and economic strength go hand in hand. You can learn more about United Way's impact on page 4.

But behind every number is a story. You'll see these stories throughout the pages ahead, which capture how your generosity creates opportunities, transforms lives and builds a stronger future for our neighbors.

We are deeply grateful for your trust, your partnership and your commitment. Thank you for helping us bring these scenes to life and for proving, once again, that United is the Way.



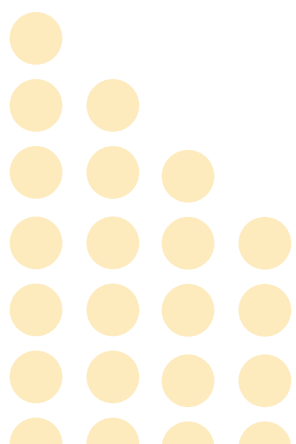
A handwritten signature in blue ink that reads "Bobbi Watt Geer".

Bobbi Watt Geer, Ph.D.
President & CEO
United Way of Southwestern
Pennsylvania



A handwritten signature in blue ink that reads "Stacy M. Juchno".

Stacy M. Juchno
United Way Board Chair
EVP & General Auditor
PNC Financial Services
Group Inc.



YEAR IN REVIEW

SNAPSHOT: THE YEAR AT A GLANCE.

Our neighbors here in southwestern Pennsylvania are resilient and hard-working, doing their best every day to fulfill their dreams and make our region one where everyone can thrive. The data shows that, despite their best efforts, too many people in our region are unable to make ends meet no matter how hard they work.

United Way uses data to understand how people are truly faring. Two tools help bring this picture into focus: ALICE, which reveals the scale and nature of financial hardship in our community, and PA 211 Southwest, which directly connects people to help when they need it most.



In our region, nearly two in five households are **ALICE – Asset Limited, Income Constrained, Employed**. These are our neighbors who work, often in essential roles, yet struggle to afford basics like housing, food, child care, transportation and health care. ALICE gives a clearer view of financial strain than the federal poverty level, helping leaders prioritize solutions that truly meet community needs.



PA 211 Southwest is a free 24/7 helpline and online resource that connects people to trusted local services – from housing and food assistance to mental health support and transportation. Trained specialists answer calls and chats every day of the year. See more about 211 on page 16.

\$38.4 MILLION INVESTED

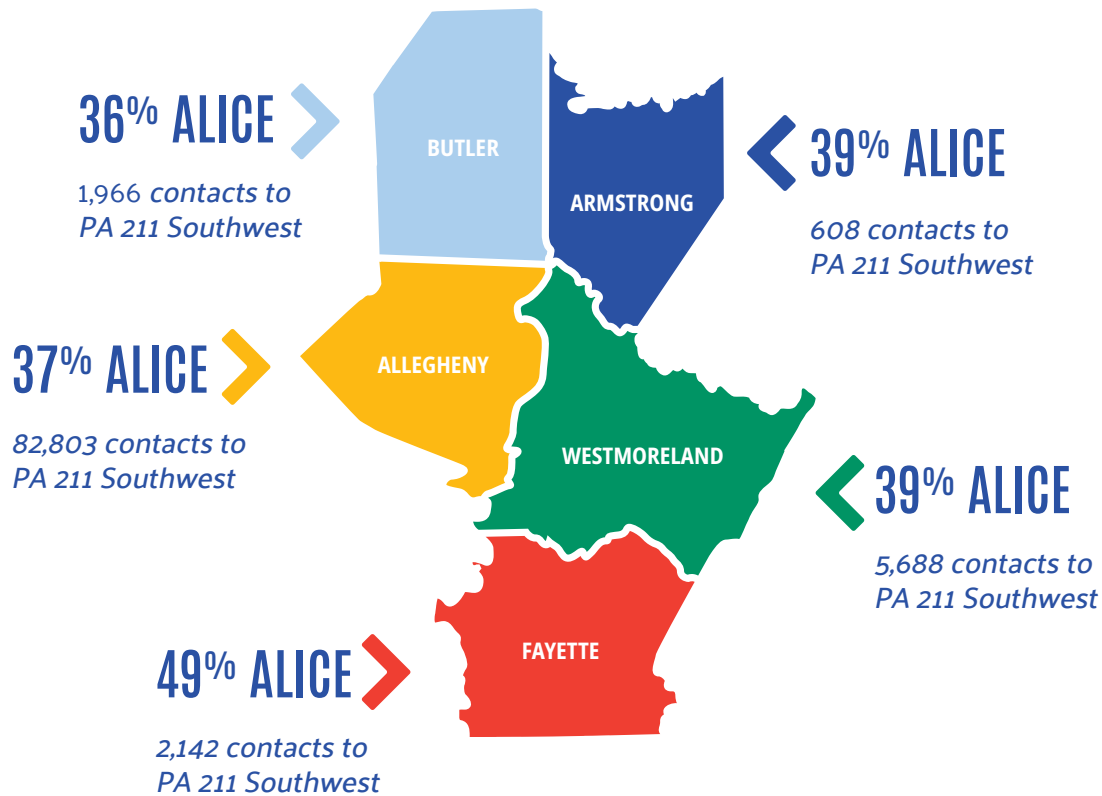
150,262 211 CONTACTS ANSWERED BY A LIVE PERSON

\$2 ECONOMIC RETURN PER \$1 INVESTED

1.48 MILLION PEOPLE HELPED

9,257 HOUSEHOLDS BENEFITED FROM FREE TAX PREP

ALICE AND 211 BY COUNTY



Investing in 100+ Agencies.

Through strategic investments, vital partnerships and volunteer action, United Way of Southwestern Pennsylvania improves lives and strengthens communities – turning generosity into measurable results across five counties. Last year, United Way invested \$38.4 million in human services funding and assistance – including \$6.69 million in Multi-Year Grants – reaching 1.48 million people through our investments, volunteer engagement programs and our PA 211 Southwest help line.



\$65.4 MILLION CONTRIBUTED TO
REGIONAL GROSS DOMESTIC PRODUCT.



MORE THAN
LIVES
CHANGED



581 JOBS CREATED,
\$34.7 MILLION IN LABOR INCOME.



ECONOMIC IMPACT STUDY

$$\text{\$1} + \text{United Way Logo} = \text{\$2 FOR SOUTHWESTERN PENNSYLVANIA}$$

YOUR GIVING IMPACTS OUR REGIONAL ECONOMY.

When you invest in United Way of Southwestern Pennsylvania, your generosity does more than change individual lives – it strengthens the economic fabric of our entire region.



A groundbreaking PwC study, published in November 2024, confirms what many have long believed: United Way is not only a force for social good but also a powerful economic engine. Believed to be among the first economic contribution studies ever conducted for a human services nonprofit, the analysis applied proven methodologies typically reserved for the corporate sector to evaluate United Way's fiscal year 2023 performance.

The results were striking and extend far beyond grantmaking. United Way's combined activities – including charitable investments, free tax preparation services and the PA 211 Southwest helpline – supported 581 regional jobs, generated \$34.7 million in labor income and contributed \$65.4 million to the region's gross domestic product.

In other words, every dollar invested in United Way generated at least two dollars of positive economic value for southwestern Pennsylvania. That's a measurable return on investment with an immeasurable human impact.



"This study represents a new way of thinking about human services philanthropy. It shows that organizations like United Way are not only funding critical human services that help those who use those services to thrive. We're also a significant contributor to the regional economy and that benefits everyone."

– Stacy M. Juchno, United Way Board Chair, EVP & General Auditor, PNC Financial Services Group Inc.



103 MULTI-YEAR GRANTS TOTALING
\$3.47 MILLION FOR BASIC NEEDS.



MEETING
BASIC
NEEDS



ACCESS TO NUTRITIOUS FOOD,
SAFE HOUSING AND SUPPORTIVE
COMMUNITY RESOURCES.



SCENES OF SECURITY

Behind every request for help is a story – a parent deciding between groceries and medicine, a senior living alone without support, a family working hard yet still falling short. United Way stands with our neighbors in these moments, connecting people to resources that protect their health, dignity and well-being, and keeping communities strong.

United Way helps keep families secure by funding agencies that help people meet their basic needs. By coordinating efforts across a trusted network of partners and using data to identify emerging challenges, we connect people quickly to vital resources – helping neighbors build resilience, gain stability and find dignity and hope. This includes supporting older adults and ensuring that people of all ages and abilities remain engaged in the community and have access to programs that keep them active and well.



SCENES OF CONFIDENCE

Financial stability opens the door to pride and opportunity. United Way helps individuals and families gain confidence and control over their futures through financial education, free tax preparation and support for programs that open doors to jobs with household-sustaining wages. By removing barriers and building skills, we empower our neighbors to achieve lasting independence and financial freedom.



In 2025, United Way's Free Tax Prep helped 9,257 households claim \$13.2 million in refunds, including \$5 million in Earned Income Tax Credits – up 10.5% from last year. Participants also saved \$2.5 million in preparation fees. Since 2009, the program has generated more than \$212 million in refunds and saved taxpayers \$29.4 million in fees.

FREE TAX PREP

REFUNDS THROUGH FREE TAX PREP
CAN EQUAL HALF OF FAMILIES'
ANNUAL INCOME.



MOVING TO
FINANCIAL
STABILITY





\$1.99 MILLION IN GRANTS BENEFITING
52,111 CHILDREN AND YOUTH.



BUILDING
SUCCESS
IN SCHOOL
AND LIFE



"BUTLER COUNTY COMMUNITY COLLEGE'S
PARTNERSHIP WITH UNITED WAY HELPS
STUDENTS FOCUS ON ACADEMIC SUCCESS."
— JULI LOUITT, DIRECTOR OF STUDENT
FINANCIAL SERVICES



SCENES OF SUCCESS

Every child deserves the opportunity to learn and gain the skills to succeed in life. United Way supports young people from early childhood through entry into college and careers. From pre-K readiness to career mentoring in rural and urban communities, we help ensure every child has the foundation to grow, thrive and reach their full potential.

A LITTLE GOES A LONG WAY.

United Way's College Emergency Financial Assistance (CEFA) Program partners with eight colleges and universities to provide small grants for unexpected expenses that could derail students' progress. These flexible funds, often under \$1,000, cover needs like car repairs, child care or unpaid bills from other schools that can prevent transcripts from being released. In 2024, \$33,165 in assistance kept 58 students on track to earn degrees that lead to family-sustaining wages.

CEFA in action: North Side resident Weslynn Jones is a single mom pursuing her business management certificate at CCAC. Her goal is to continue to cosmetology school and one day open her own business. When an unexpected financial crisis threatened to derail that plan, United Way's College Emergency Financial Assistance stepped in just in time, helping her stay on track and remain in school.



"It's not easy, but I am determined to push myself through to build a better life for myself and my children. I took a financial loss when I switched from full-time to part-time work to go to school and needed emergency financial help to stay in school. CEFA funding took away the stress of keeping up with bills. It gave me support and connected me to people who really cared and wanted to help me with some of my emergency financial needs."

—Weslynn Jones
CCAC student

College Emergency Financial Assistance Partners:

Butler County Community College • Carlow University • Citizens School of Nursing • Community College of Allegheny County • Duquesne University • Penn State Fayette • Slippery Rock University • Westmoreland County Community College.

ADVOCATES FOR CHANGE

United Way is a powerful voice for the community. Through advocacy, awareness campaigns and strategic partnerships, we champion policies that support individuals and families while raising visibility for essential services.

ADVOCACY.

The overwhelming bipartisan passage of Pennsylvania House Bill 820 (Working Pennsylvanians Tax Credit) in May 2025 marked a significant step toward greater economic opportunity for working families. The bill moved Pennsylvania closer to having a Pennsylvania-specific Earned Income Tax Credit set at 30% of the federal credit, providing an average of \$220 in relief to eligible households. The legislation was folded in the Pennsylvania state budget, which was at an impasse that started July 1.

Note: On Nov. 12, 2025, after a 135-day impasse, Pennsylvania's budget was passed, making the Working Pennsylvanians Tax Credit law and also allowing billions in state funding to flow to local and county government and to schools across the commonwealth.



AWARENESS.

Free Tax Preparation: To boost participation in Free Tax Prep, United Way launched a targeted awareness campaign across digital, outdoor, transit and search channels. The campaign alerted working families to free filing options and valuable tax credits, driving record participation and delivering millions in refunds that strengthened household stability and the regional economy.



Expanding Internet Access: Internet access has become a basic human need, essential for education, employment and health care. With support from Comcast, United Way launched an awareness campaign to connect households without reliable service to free or low-cost options. Through PA 211 Southwest's digital navigation staff at our partner agencies, families gained the connectivity they need to thrive. Our Digital Navigator partner agencies are:

- Fayette County Community Action Agency.
- Goodwill of Southwestern Pennsylvania.
- Literacy Pittsburgh.
- Reimagine Reentry.
- Vintage Senior Services.
- YWCA of Westmoreland County.

From July 2024 to June 2025, Digital Navigators assisted 985 clients with 702 referrals to increase access to internet, low- or no-cost devices, and digital skills training programs.

THOUGHT LEADERSHIP.

United Way is committed to shaping public discourse and advancing solutions that strengthen our region. Through editorials, strategic partnerships and active engagement in key conversations, we elevate critical community issues and advocate for policies that create lasting impact. By lending our voice, we help drive progress toward a thriving community.

211: A COMMUNITY'S LIFELINE

United Way's PA 211 Southwest is far more than a helpline. Every contact is answered by a live trained resource navigator by phone, text or online chat. Available 24/7 by phone, text or chat, our compassionate highly trained navigators are real people, never chatbots, who connect people across 30 counties to agencies providing essential resources such as food, shelter, health care and job support. In addition, PA 211 offers a searchable database of 7,000 agencies, accessible for free at any time. Our data specialists work year-round to keep this information accurate and up to date.

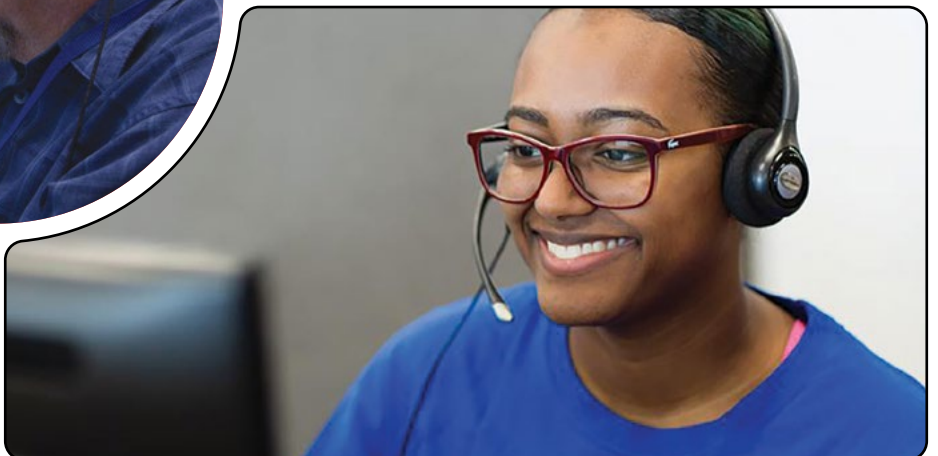
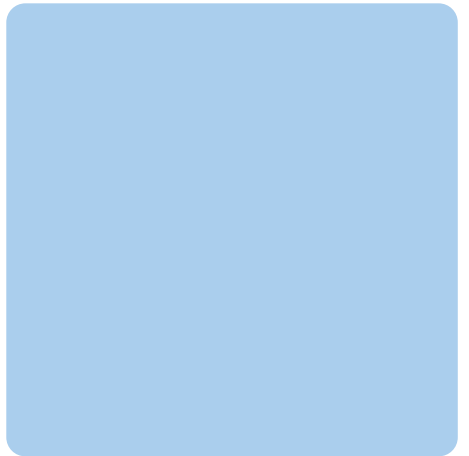
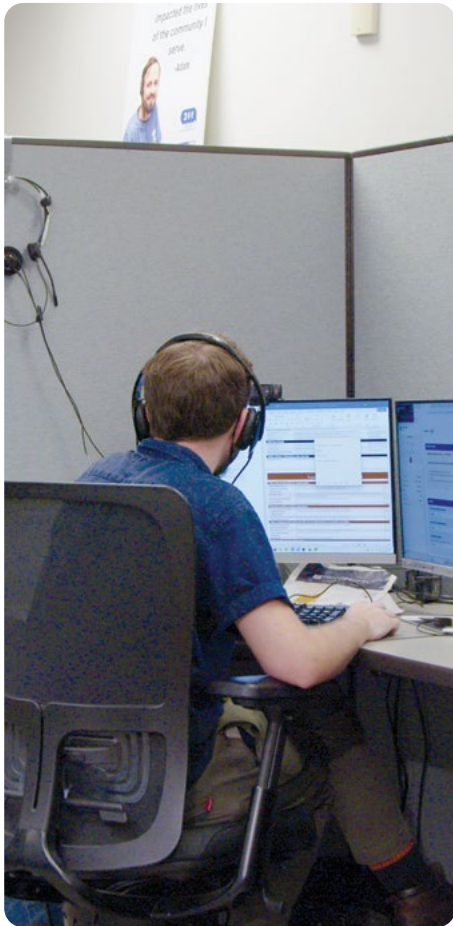
DEMAND IS OUTPACING RESOURCES.

The greatest challenge facing 211 is the growing gap between community needs and the resources available to meet them. In the past year, 211 contacts increased significantly, while agency capacity was stressed by state and federal funding cuts. This growing gap means longer wait times and fewer options for families in crisis – underscoring the urgency of continued investment in our region's safety net. As more people turn to 211 for help, the strain on local agencies and support systems continues to increase.

EXPANDING ACCESS ONLINE.

At pa211.org, anyone can find trusted human service providers in their area. Unlike a general web search, PA 211 only lists vetted agencies and organizations – no ads, no distractions. This self-help tool makes it easy for individuals and families to quickly locate reliable resources for food, housing, health care, employment support and more.

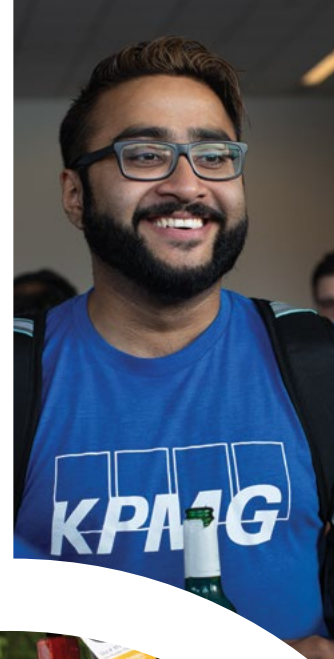




SCENES OF INVOLVEMENT

United Way connects individuals, families and companies to hands-on volunteer opportunities that make a real difference. Last year, 5,200 volunteers helped distribute food, books, diapers and personal care packages to 67,000 people. Through service, participants experience impact, build connections and see firsthand how collective action strengthens our community.





LAST YEAR, UNITED WAY
VOLUNTEERS DONATED 9,800
HOURS OF THEIR TIME TO 257
PARTNER AGENCIES.



YOUR DONATIONS IN ACTION.



UNITED WAY
of Southwestern
Pennsylvania

Thanks to your contributions,
nearly 1.48 million people have
accessed life-changing services.

MEETING BASIC NEEDS



610,000*

People contacted PA 211
for assistance.

102,733

Individuals received
food assistance.

3,564

People were provided
emergency shelter.

*You helped United Way
support people in
meeting basic needs.*

MOVING TO FINANCIAL STABILITY



9,257

People working hard for low
wages received free tax prep and
a total of \$13M+ in refunds.

4,346

Individuals connected to career
training and skill-building
programs.

3,870

People accessed benefits
counseling and financial
literacy programs.

*You aided United Way
in moving people to
financial stability.*

BUILDING FOR SUCCESS IN SCHOOL & LIFE



54,255

High-quality books
were distributed to children
across our region.

18,650

Children benefited from
kindergarten readiness and
registration programs.

5,151

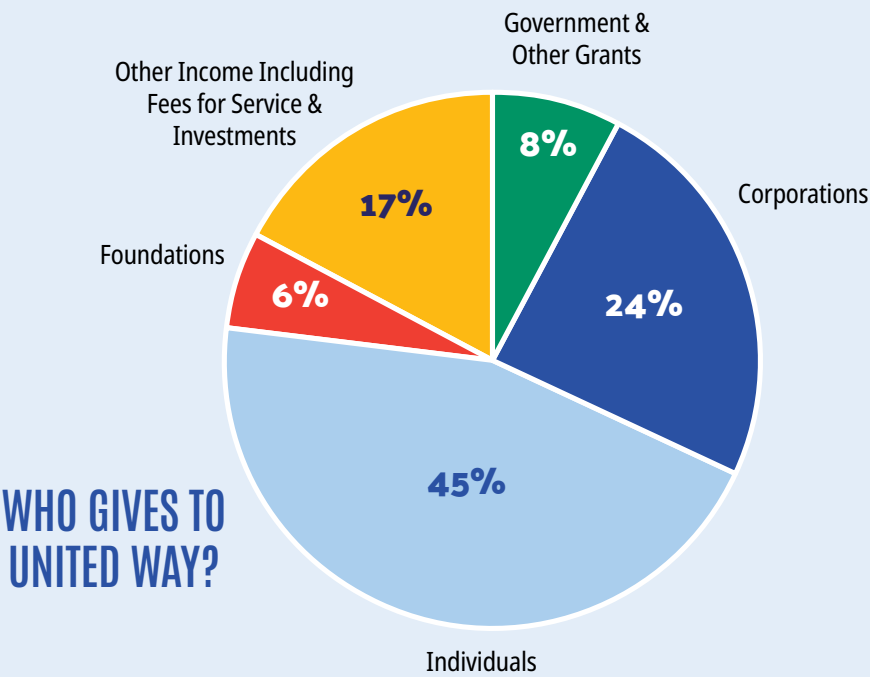
Children pre-K-12
enjoyed high-quality
out-of-school time programs.

*You supported United Way
in helping students achieve
their dreams.*

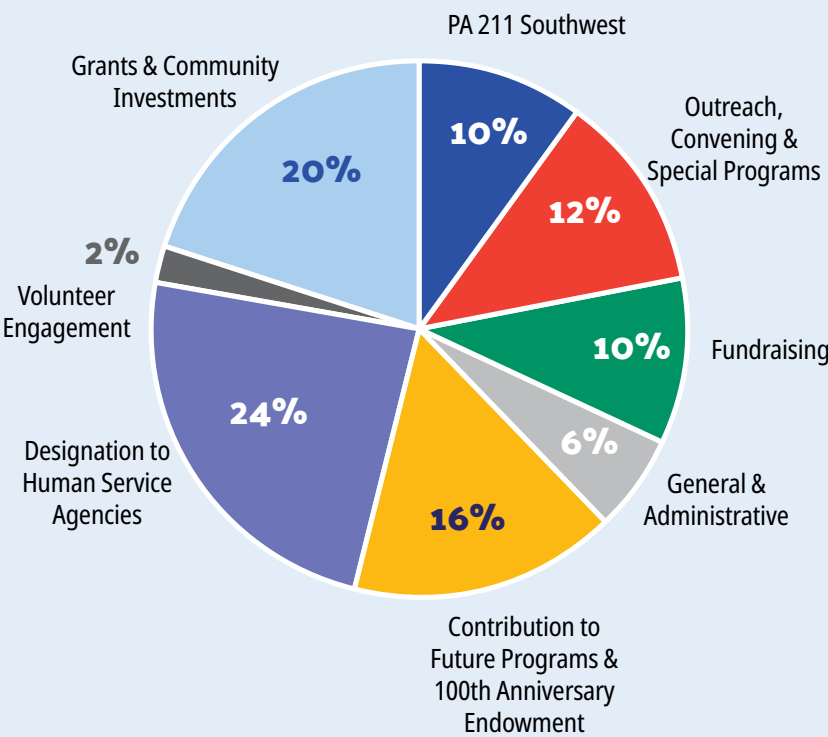
Results are from July 1, 2024, to June 30, 2025. *Numbers reflect that United Way of Southwestern PA's 211 resource navigators handle contacts and web searches for all of southwestern, northeast and southeast Pennsylvania.

FINANCIALS

From July 1, 2024, to June 30, 2025, corporations, foundations & individuals contributed \$38.4 million to fund meaningful impact for neighbors in our five-county region. These funds are then invested by United Way back out into the community to provide vital human services.



\$38.4 MILLION INVESTED BY UNITED WAY IN 2024-2025



LEADING THE WAY

Our leadership donors make our work possible and are a vital sounding board for all that we do.

TOCQUEVILLE SOCIETY.

The Tocqueville Society honors United Way's most generous donors: those who contribute \$10,000 or more annually. These visionary leaders fuel long-term innovative solutions to our region's toughest challenges. This philanthropy shapes the community's future, inspires others to give, and deepens our ability to make meaningful, lasting impact.

"We see philanthropy not just as charity but as strategy; a powerful investment in the future of our community."

– Darrell and Denise Smalley, EY and University of Pittsburgh.



WOMEN UNITED.

Women United is one of the region's largest and most dynamic philanthropic networks, with more than 2,000 members who share a commitment to supporting United Way's work. Through leadership giving, members support initiatives that address the unique needs of women and children while empowering one another through connection, celebration and shared purpose.



"What inspires me most about Women United is the incredible diversity of voices and experiences. Seeing women from so many different backgrounds come together to create real change reminds me that our collective strength is what makes this community powerful."

– Yaqi Wo, PPG Industries Inc.

BRIDGES SOCIETY.

Bridges Society unites nearly 3,000 change seekers who give \$1,000 or more annually to build a thriving region. Members come from diverse backgrounds and careers, contributing time, talent and resources to create lasting impact. Through giving, volunteering and advocacy, Bridges Society members lead by example and inspire others to strengthen our community.

"United Way's Bridges Society fosters a powerful sense of community among driven service-minded professionals and leaders, all united by a shared commitment to creating meaningful change where we live and work."

– Toby Eberhardt, KPMG LLP.





SHAPING THE FUTURE

Next Gen Ambassador Circle brings together young professionals and their allies who are eager to lead, give back and connect. This diverse network adds energy and a fresh perspective to United Way's work, inspiring lasting impact through meaningful engagement, volunteering and shared commitment to building a stronger future.

CONNECT U.

For six years, Connect U has attracted some of the region's best emerging leaders. This nine-week program brings professionals together with community leaders and experts to build philanthropic leadership skills and forge meaningful relationships. Participants gain insight into how human service agencies meet critical needs and create lasting change through collaboration and volunteerism.



"The Connect U program provided an incredible opportunity to witness the real impact United Way has in our community. Visiting agencies like Community Kitchen Pittsburgh was especially meaningful for me, given my background in the restaurant industry. Their mission to help people rebuild their lives through culinary training is something I'll never forget. Connect U is a truly powerful initiative that I hope continues for many years to come."

- Jonathon Crudup, Howard Hanna Real Estate Services Inc., Connect U graduate and Next Gen Ambassador's Circle member.



BOARD OF DIRECTORS

Stacy M. Juchno (Board Chair) *
PNC Financial Services Group Inc.

Kenneth Altemus
Westinghouse Electric Company

Alicia Andrews, MPA, MSW
Eden Hall Foundation

Stephanie Apostolou
Koppers Holdings, Inc.

Kenny Bonus, CPA ^
Bonus Accounting

Brooks Broadhurst *
Eat'n Park Hospitality Group, Inc.

Keri Brown
Giant Eagle, Inc.

Christine Bryant *
Brenntag

Raymond W. Buehler, Jr. *
Special Counsel - Schneider Downs

Jayme L. Butcher
Blank Rome

Fernando Ceccarelli
Eaton

Jeffery P. Craft
Deloitte LLP

Zaira Cruz Melendez *
Eaton

Caroline DeFrank
Pittsburgh Steelers

Robert A. DeMichiei *
EVP & CFO – UPMC - Retired

Michael R. Denove *
Ernst & Young

Grant Fleming, CFP
Baird, Inc.

Anne Foulkes
PPG

Josiah Gilliam
PUMP

Megan Gilson
PNC Financial Services Group Inc.

Gretchen R. Haggerty *
Community Volunteer

Hayley A. Haldeman
Pittsburgh Cultural Trust

William Haldeman
University of Pittsburgh

Richard J. Harshman *
CEO – ATI Inc. - Retired

David B. Heaton
The Buncher Company

Diane P. Holder
UPMC Health Plan, Inc. - Retired

Erin Isler *
PNC Financial Services Group Inc.

Justin Kaufman
PwC

Rebekah Byers Kcehowski
Jones Day

Katharine Eagan Kelleman
Pittsburgh Regional Transit

Darrin Kelly
Allegheny/Fayette Central Labor Council, AFL-CIO

Elizabeth E. Krisher, CPA, CGFM * +
Maher Duessel CPAs

Karen L. Larrimer *
Community Volunteer

Dan LaVallee *
UPMC Health Plan, Inc.

David W. Lynn +
Penn Line Enterprises, Inc.

Jeff Mallory, Ed.D.
Saint Vincent College

David J. Malone *
Gateway Financial Group, Inc.

Chris McComish
S&T Bank

Crystal McCormick Ware
Duquesne University

James J. McQuade
Dollar Bank

Laura N.K. Miller, Esq.
UPMC Health Plan Inc.

Tamra E. Minnier, RN, MSN, FACHE
UPMC

Myah Moore Irick, ChFC
The Irick Group, Merrill Private Wealth Management

Christina Morascyzk
Giant Eagle, Inc.

Emily Nally *
University of Pittsburgh

James D. Newell *
Buchanan Ingersoll & Rooney PC

Richard Novak
Federated Hermes, Inc.

Daniel A. Onorato
Highmark Health

Jake Ploeger
P. J. Dick/Trumbull/Lindy Paving

Deborah L. Rice-Johnson *
Highmark Inc.

Arthur J. Rooney II *
Pittsburgh Steelers

James R. Segerdahl
K&L Gates

Alice Sox
Covestro

Darrell Smalley*
Ernst & Young LLP

Steven D. Thompson, CPA *
Schneider Downs

Mark A. Twerdok
KPMG

Tom VanKirk *
CLO - Highmark Health - Retired

Donald J. Vigliotti, MD ^
Community Volunteer

Marc Williams
FedEx Ground

Most Reverend David A. Zubik *
Bishop
Diocese of Pittsburgh - Retired

LOCAL OPERATING BOARDS

BUTLER & ARMSTRONG COUNTIES

Neil Ashbaugh
New Century Careers

Kenny Bonus, CPA
Bonus Accounting

Ron Bowser
USW International

Debbie Crum
Experience Butler County

Jodi Fowler
University of Pittsburgh

Sheri Hershberger
Clearview Federal Credit Union

Darla Livermore
NexTier Bank

John Perock
Westinghouse

Dr. Belinda Richardson
Butler County Community College

Sylena Smith
Westinghouse

Tiffany Trudgen
Freeport Area School District

Dr. Donald J. Vigliotti
Community Volunteer

WESTMORELAND & FAYETTE COUNTIES

Carole Blake
Penn Line Enterprises, Inc.

Robert Brooks
Community Volunteer

Janet Corrinne-Harvey
Westmoreland County Community College

Dan DeBone
Westmoreland County Chamber of Commerce

David Ebersole
Westinghouse Electric

Jim Frey
Gulf Coast Bank & Trust Co.

Jeffrey Godwin
Saint Vincent College

John Kline
1st Summit Bank

Elizabeth E. Krisher, CPA, CGFM
Maher Duessel CPAs

Brian Lawrence
Westmoreland County Redevelopment Authority and Land Bank

Marc Lippa
Kennametal, Inc.

Dave Lynn
Penn Line Enterprises, Inc.

Dirk Matson
Community Volunteer

Ron Ott
Community Volunteer

Nick Pflugh
Industrial Scientific

Denice Robinson
Community Volunteer

Doug Sanner
Xerox Business Solutions

Dan Wagner
First Commonwealth Bank

* Executive Committee member + Westmoreland/Fayette County representative ^ Butler/Armstrong County representative
Board members as of Nov. 12, 2025. Local board members as of Oct. 28, 2025.

FOUNDATION PARTNERS

Our foundation partners play a vital role in driving meaningful change across the region. Through their strategic investments and shared commitment to community impact, these organizations help address critical needs, strengthen local services, and create lasting solutions that improve lives for individuals and families.

Ann & Frank Cahouet Foundation

Arconic Foundation

Bank of America Charitable Foundation

BNY Mellon Foundation of Southwestern PA

Claude Worthington Benedum Foundation

Comcast NBCUniversal

Community Foundation of Fayette County

Eden Hall Foundation

Eleanor D. Merrick Foundation

Emanuel and Mary Spector Endowment Fund

FISA Foundation

Hillman Family Foundations

James M. & Lucy K. Schoonmaker Foundation

Jefferson Regional Foundation

Jewish Healthcare Foundation

M&T Charitable Foundation

McElhattan Foundation

MJY Open Hands Fund

Paul and Anne Smiy Family Foundation

Pellicci-Broujos Family Fund

Pittsburgh Foundation Funds

Pittsburgh Penguins Foundation

PNC Charitable Trusts

Posner Foundation of Pittsburgh

Roy A. Hunt Foundation

Silicon Valley Community Foundation

Snyder Charitable Foundation

Staunton Farm Foundation

The Buhl Foundation

The Canizares Anderson Fund (Vanguard Charitable)

The Community Foundation of Westmoreland County

The Grable Foundation

The Heinz Endowments

The Jack Buncher Foundation

The Pittsburgh Foundation

The Siemer Institute for Family Stability

United Way of Pennsylvania

United Way Worldwide

CORPORATE GIFTS

Thank you to these companies for allocating at least 50% of their contributions of \$10,000 or more to United Way without restrictions on which agencies or causes will benefit.

PNC Financial Services Group Inc. *

Highmark Health/AHN *

PPG **

FedEx Corporation **

Pittsburgh Steelers

Peoples *

FirstEnergy **

MSA Safety Inc. **

First National Bank of Pennsylvania **

Williams **

Dollar Bank **

Buchanan Ingersoll & Rooney PC

Kennametal Inc. *

Federated Hermes, Inc. **

Giant Eagle **

Eat'n Park Hospitality Group, Inc. **

Koppers Holdings Inc. *

P. J. Dick/Trumbull/Lindy Paving family of companies **

Westinghouse Electric Company *

Eaton Corporation **

Raymond James Financial Services

Covestro LLC **

Duquesne Light Company **

BNY **

Naval Nuclear Laboratory **

Bayer Radiology LLC **

United Steelworkers **

Calgon Carbon Corporation *

Electrical Workers and Employers of IBEW Local Union No. 5 **

AAA East Central - Headquarters **

NOVA Chemicals Inc. **

Baird, Inc. **

Wabtec Corp.

LANXESS Corporation **

Ebara Elliott Energy *

Carpenter Technology Corporation **

UPMC **

Pittsburgh Pirates

Pittsburgh Penguins **

The Buncher Company **

Sheetz, Inc. **

First Commonwealth Bank **

Bank of America Charitable Foundation

Exxon Mobil Corporation / XTO Energy **

M&T Charitable Foundation

The Techs **

NexTier Bank **

Massaro Construction Group **

Schneider Downs

Erie Insurance Group **

Curtiss-Wright **

Agr International, Inc. **

Jones Day **

S&T Bank **

Caterpillar **

Fifth Third Bank **

Teamsters Local Union No. 205 **

Acrisure **

Emerson Corporate Foundation **

** = 100% to Unrestricted.

* = 50%+ to Unrestricted.

AGENCIES RECEIVING MULTI-YEAR GRANTS

MEETING BASIC NEEDS

412 Food Rescue A

Food Recovery Operations Support

Abiding Missions A

No Neighbors in Need

ACTION-Housing, Inc. A

The Sustainable Home Improvement Program

American Cancer Society B W

Access to Care

American Red Cross, Southwestern Pennsylvania Chapter A

Community Partnership

American Red Cross, Southwestern Pennsylvania Chapter A B F W

Disaster Relief

Bethany Christian Services of Western Pennsylvania W

Safe Families for Children™ (SFFC)

Beverly's Birthdays A W

A Formula for Cheer: The Greater Pittsburgh Infant Formula Bank

Bible Center Church A

Oasis Farm and Fishery (OFF)

Blackburn Center W

Emergency Shelter for Victims of Domestic Violence, Legal and Medical Advocacy, Outreach Program to Protect Older Adults From Abuse

Catholic Charities of the Diocese of Greensburg A F W

Information and Referral

Catholic Charities of the Diocese of Pittsburgh, Inc. A

Community Partnership

Catholic Charities of the Diocese of Pittsburgh, Inc. B

Families and Communities Thriving

Center for Community Resources, Inc. B

Utility Integrated Point of Contact (UIPOC)

Center for Hearing & Deaf Services, Inc. F W

Sign Language and Interpretation Supports

Court Appointed Special Advocates (CASA) of Westmoreland, Inc. W

Operational Support

Domestic Violence Services of Southwestern PA F

Fayette Safe House Program

Familylinks Inc. A

Familylinks Community Connections Program

Fayette County Community Action Agency Inc F

FCCAA Food Bank

Glade Run Lutheran Services B

Warming Center

Global Links A

Community Partners Program - Personal Care Kit Initiative

Greater Pittsburgh Community Food Bank A

Fresh Foods Initiative

Helping All Victims in Need HAVIN A

Safety and Support for Survivors

Interfaith Volunteer Caregivers of Fayette Inc. F

Interfaith Volunteer Caregivers of Fayette Inc

Jean B. Purvis Community Health Center B

Dental Care for the Uninsured

Jewish Community Center of Greater Pittsburgh (JCC) A

AgeWell Pittsburgh

Jewish Family and Community Services A

SOS Pittsburgh

Jubilee Association, Inc. A

Strengthening Basic Needs and Social Services

Just Harvest Education Fund A

Building Economic Justice and Food Justice For All

Just Mediation Pittsburgh A

Eviction Prevention Mediation Support Services

Knead Community Café W
Knead Free Meal Program

Laurel Area Interfaith Volunteer Caregivers W
Local Elderly Thrive Not Just Survive

Lifesteps B
Adult Day Health Services (ADHS)

Macedonia Family & Community Enrichment Center (FACE) A
Macedonia FACE Active for Life Senior Center, Macedonia FACE Lifeline Program, Meals on Wheels of Greater Pittsburgh

Neighborhood Legal Services Association A B
Project Shape: Stabilizing Housing and Preventing Evictions Through Community Partnerships

North Hills Affordable Housing (dba HEARTH) A
HEARTH Transitional and Supportive Housing Program

Northern Area Multi-Service Center of Allegheny Co. A
Transportation HUB Solutions-Linking Transportation Models to Address Service Inadequacy

Pittsburgh Food Policy Council A
Network in Action: Implementing a Regional Food Plan

RentHelpPGH A
Housing Stabilization Center Resource Navigator and Appeals Specialist

Salvation Army of Western PA B W
Comprehensive Social Services

SisTers PGH A
Rent/Utility and Emergency Assistance Program

South Hills Interfaith Movement A
Holistic Household Stability

SPHS Connect Inc. W
Welcome Home

The Lighthouse Foundation B
The Lighthouse Foundation Food Pantry, Transitional Housing

The Union Mission W
Homeless Response System

Veterans Leadership Program of Western Pennsylvania, Inc. A
Project Journey

Veterans Place of Washington Boulevard A
Veterans Resource Center

Vintage A
Vintage Center for Active Adults

Western Pennsylvania Diaper Bank A F W
Basic Needs Distribution

Westmoreland Food Bank W
Westmoreland Food Bank Outreach and Expansion Program

Women's Center and Shelter of Greater Pittsburgh A
Immediate Needs Coordination for Survivors of Intimate Partner Violence, Preventing Homelessness Through Expanded Housing Advocacy for Victims of Intimate Partner Violence

YWCA Greater Pittsburgh A
YWCA Greater Pittsburgh's Emergency Basic Needs Program

A Allegheny County A Armstrong County B Butler County F Fayette County W Westmoreland County

MOVING TO FINANCIAL STABILITY

ACHIEVA ^A

Benefits Counseling

Allegheny Family Network ^A

AFN Adult Education Program

Auberle ^A

Life Changing Career Pathways

Bidwell Training Center ^A

Bidwell Training Center's Career Training Programs

Catapult Greater Pittsburgh ^A

Asset Building Program

Center for Community Resources, Inc. ^B

Volunteer Income Tax Assistance (VITA)

Community Kitchen Pittsburgh ^A

Community meals and culinary training for people overcoming adversity

Dress for Success Pittsburgh ^A

Supporting Mobile Services

FamilyLife Network, Inc. (dba Origins Family & Pregnancy Services) ^W

Understanding Family Finances

Fayette County Community Action Agency Inc. ^F

Financial Opportunity Center

Human Services Center Mon Valley ^A

Human Services Center's Financial Empowerment Community Outreach

Jeremiah's Place ^A

Crisis Childcare Program

Jewish Family and Community Services ^A

JFCS Career Development Services

Lifesteps ^B

Transition and Employment Services

Life'sWork of Western PA ^{F W}

Employment Support Services for Individuals in Recovery from Substance Use Disorders

Literacy Pittsburgh ^A

Ready and Relevant Student Services

Mon Valley Initiative ^A

MVI Workforce Development & Financial Coaching Program

Neighborhood Allies ^A

Building Opportunity through Financial Empowerment

New Century Careers, Inc. ^{A W}

Training for In-Demand Jobs Through the Manufacturing 2000 (M2K) PA Pre-Apprenticeship Program

PA Women Work ^A

Economic Mobility Through Mentorship

Pittsburgh Scholar House ^A

Pittsburgh Scholar House Wayfinders Program

Reimagine Reentry ^A

Multi-Craft Core Curriculum (MC3)

Travelers Aid Society of Pittsburgh ^A

Travelers Aid Transportation Collaborative

Westmoreland Community Action ^W

Housing Counseling Money Management Center/VITA

YWCA Butler ^B

Getting Ahead in a Just Gettin' By World

YWCA Westmoreland County ^W

Program Expansion - Literacy, Financial Literacy, and Digital Literacy

COMMUNITY PARTNERSHIPS

Allies for Children ^A

General Operating Support

American Red Cross, Southwestern Pennsylvania Chapter ^A

Emergency/Disaster Services & Coordination

Allegheny Program to Aid Citizen Enterprise ^A

Technical Assistance to Nonprofits

^A Allegheny County ^A Armstrong County ^B Butler County ^F Fayette County ^W Westmoreland County

BUILDING FOR SUCCESS IN SCHOOL AND LIFE

Alliance for Refugee Youth Support and Education ^A

PRYSE Academy

Armstrong Center for Community Learning ^A

Outdoor Discovery Center Nature Lessons

Bhutanese Community Association of Pittsburgh (BCAP) ^A

Afterschool Academy

Big Brothers Big Sisters of Greater Pittsburgh ^A

Community-based Mentoring Program for Historically Underserved Youth

Big Brothers Big Sisters of the Laurel Region ^{F W}

Positive Relationships With Strong Role Models for Westmoreland and Fayette Youth

Blackburn Center ^W

Dating Violence, Sexual Abuse and Bullying Prevention Programs in Schools

Boys & Girls Clubs of Western Pennsylvania ^A

Activating and Advancing the Potential through BGCWPA

Center for Hearing & Deaf Services, Inc. ^W

Deaf Youth/Friends Program

Center of Life ^A

Supporting Youth-Enrichment, Family-Strengthening, and Community-Empowerment Programs

Children's Hospital of Pittsburgh Foundation ^A

Coaching Boys Into Men - An Effective School Athletics-Based Program to Reduce Dating Violence

Community Care Connections, Inc. ^B

Camp Apple with Teen Camp Apple

Crossroads Foundation ^A

Equitable Pathways: Bridging Educational Gaps for Future Success

Domestic Violence Services of Southwestern PA ^F

Connected and Respected, Social Emotional Learning for a Healthier Tomorrow

Early Learning Connections ^B

Family Engagement and School Readiness Events

East End United Community Center ^F

Exploring the World Around Us

Ford City Public Library ^A

Community Tutoring Program

Greensburg Hempfield Area Library ^W

Early Career Ramps @ Public Libraries

Gwen's Girls, Inc. ^A

STEMpowered Career Preparatory Program

Helping All Victims in Need HAVIN ^A

Healthy Relationships Project

Homeless Children's Education Fund ^A

Teen CEO

Homewood Children's Village ^A

Building a Pathway to Success: The College & Career Readiness Project

Human Services Center Mon Valley ^A

Human Services Center Youth Moving Towards Success

Industrial Arts Workshop ^A

Expanding School Partnerships

Latino Community Center (LCC) ^A

Empowering Allegheny County Latinx Children and Parents for Long-Term Success

Lifesteps ^{A B}

Early Education Advancement Services

Life'sWork of Western PA ^A

Enable Youth With Disabilities Make a Successful Transition From School to the World of Work

Mooncrest Neighborhood Programs / Hopebound Ministries ^A

Mooncrest After School Program (MASP)

Mosaic Community Development Center ^W

Mosaic Community Development Center After School Program

Neighborhood Learning Alliance ^A

High School University (HSU)

PEAL Center Parent Education and Advocacy Leadership ^A

21 and Able

Sonward Youth Programs ^W

Elevate - Opportunity Lunch and Learn Mentor Program

STAT Inc. - Ligonier Therapeutic Center ^{F W}

The Equine Affect™ for Adolescents (Afterschool/Summer Programs)

STEM Coding Lab, Inc. ^A

K-8 Computer Science Education Program Expansion

The Arc of Butler County ^B

AERO (Activities, Employment, and Recreational Opportunities)

The Learning Lamp ^F

Expansion of Early Childhood Mental Health Consultant Program in Southwestern PA

The Women and Girls Foundation ^A

Girl Gov: Middle School

Valley Points Family YMCA ^W

Valley Points Family YMCA Early Learning Centers

Vision To Learn ^{B W}

Expanding Vision Care Access for Students in Southwestern Pennsylvania

Volunteers of America of Pennsylvania ^A

The Youth Empowerment Program (YEP)

Waypoint Youth & Community Center Inc. ^W

Waypoint Youth Out Of School Time Program

Wesley Family Services ^A

The Incredible Years Parenting Program

WQED ^{B W}

Teaching Preschool Children SEL Skills via Family Engagement Programs

YWCA Greater Pittsburgh ^A

YWCA Greater Pittsburgh's Educational Opportunity Programs

TOP WORKPLACE CAMPAIGNS

We are especially grateful to these corporations for their extraordinary success in leading employee fundraising campaigns. We salute you for your dedication to our community and for your work to foster a culture of giving in the workplace.

PNC Financial Services Group Inc.

UPMC

Highmark Health / AHN

PPG

University of Pittsburgh

K & L Gates LLP

KPMG

Baird, Inc.

Federated Hermes, Inc.

Pittsburgh Steelers

Williams

FedEx Corporation

Covestro LLC

MSA Safety Inc.

ATI

Buchanan Ingersoll & Rooney PC

Giant Eagle

FirstEnergy

Deloitte

Kennametal Inc.

Naval Nuclear Laboratory

Peoples

Schneider Downs

First National Bank of Pennsylvania

Eaton Corporation

PwC

Reed Smith LLP

EY

Dollar Bank

Eat'n Park Hospitality Group

Northwestern Mutual

Koppers Holdings Inc.

Westinghouse Electric Company

Jones Day

P. J. Dick/Trumbull/Lindy Paving family of companies

Raymond James Financial Services

Carnegie Mellon University

Pittsburgh Regional Transit

Wabtec Corp.

BNY Pennsylvania

Dentons Cohen & Grigsby

Costco Wholesale

Duquesne University

United States Steel Corporation

Calgon Carbon Corporation

NOVA Chemicals

AAA East Central

United Way of Southwestern Pennsylvania

Ebara Elliott Energy

LANXESS Corporation

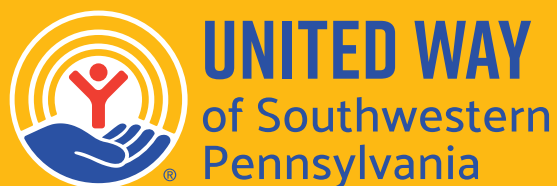
Bayer Radiology LLC

United Steelworkers

Curtiss-Wright

Henderson Brothers
S&T Bank
Glimcher Group
Bechtel Plant Machinery, Inc.
Clark Hill PLC
Electrical Workers and Employers of IBEW
Local Union No. 5
First Commonwealth Bank
Carpenter Technology Corporation
The Buncher Company
Blank Rome LLP
NexTier Bank
The Techs
ECHO Realty, L.P.
City of Pittsburgh
Calumet
Massaro Construction Group
Duquesne Light Company
Goldberg Persky & White PC
Maher Duessel CPAs
Alcoa, Inc.
Erie Insurance Group
Enterprise Rent-A-Car Company
WQED/Multimedia Programming
Bank of America
Pittsburgh Pirates
Pittsburgh Penguins

Columbia Gas of Pennsylvania
Jewish Healthcare Foundation of Pgh.
Allegheny Intermediate Unit
My Benefit Advisor
EXXON Mobil Corporation
Alstom
Federal Home Loan Bank of Pittsburgh
Caterpillar
Agr International, Inc.
Carmeuse North America
Gateway Financial Group, Inc.
Grant Thornton Advisors LLC
Sheetz, Inc.
Wesley Family Services
ALCOSAN
Dickie McCamey Chilcote PC
Tucker Arensberg P.C.
Duane Morris LLP
Adelphoi USA
Lifesteps
Gannett Fleming, Inc.



THREE OFFICES SERVING THE REGION

1250 Penn Avenue
Pittsburgh, PA 15222
412-261-6010

124 Hollywood Drive
Butler, PA 16001
724-487-6032

239 Tollgate Hill Road
Greensburg, PA 15601
724-834-7170

United Way of Southwestern Pennsylvania serves
Allegheny, Armstrong, Butler, Fayette and Westmoreland counties.



Since 2011, United Way of Southwestern Pennsylvania has earned a four-star rating from Charity Navigator, the nation's leading philanthropic evaluator. To review our Form 990 and other financial reports, please visit unitedwayswpa.org/about-us/our-financials.